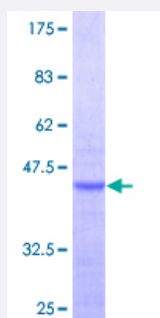


# RPL36AL (Human) Recombinant Protein (Q01)

Catalog # H00006166-Q01

Size 25 ug, 10 ug

## Applications



## Specification

<b>Product Description</b>	Human RPL36AL partial ORF ( NP_000992.1, 1 a.a. - 106 a.a.) recombinant protein with GST-tag at N-terminal.
<b>Sequence</b>	MVNVPKTRRTFCKKCGKHQPHKVTQYKKGKDSLYAQGRRRYDRKQSGYGGQTKPIFRKKAATTK KIVLRLECVEPNCRSKRMLAIKRCKHFELGGDKKRKGQVIQF
<b>Host</b>	Wheat Germ (in vitro)
<b>Theoretical MW (kDa)</b>	37.4
<b>Preparation Method</b>	<a href="#">in vitro wheat germ expression system</a>
<b>Purification</b>	Glutathione Sepharose 4 Fast Flow
<b>Quality Control Testing</b>	12.5% SDS-PAGE Stained with Coomassie Blue.
<b>Storage Buffer</b>	50 mM Tris-HCl, 10 mM reduced Glutathione, pH=8.0 in the elution buffer.
<b>Storage Instruction</b>	Store at -80°C. Aliquot to avoid repeated freezing and thawing.
<b>Note</b>	Best use within three months from the date of receipt of this protein.

## Applications

- Enzyme-linked Immunoabsorbent Assay
- Western Blot (Recombinant protein)
- Antibody Production
- Protein Array

## Gene Info — RPL36AL

Entrez GeneID [6166](#)

GeneBank Accession# [NM\\_001001](#)

Protein Accession# [NP\\_000992.1](#)

Gene Name RPL36AL

Gene Alias MGC111574, RPL36A

Gene Description ribosomal protein L36a-like

Omim ID [180469](#)

Gene Ontology [Hyperlink](#)

**Gene Summary** Cytoplasmic ribosomes, organelles that catalyze protein synthesis, consist of a small 40S subunit and a large 60S subunit. Together these subunits are composed of 4 RNA species and approximately 80 structurally distinct proteins. This gene encodes a ribosomal protein that is a component of the 60S subunit. The protein, which shares sequence similarity with yeast ribosomal protein L44, belongs to the L44E (L36AE) family of ribosomal proteins. This gene and the human gene officially named ribosomal protein L36a (RPL36A) encode nearly identical proteins; however, they are distinct genes. Although the name of this gene has been referred to as ribosomal protein L36a (RPL36A), its official name is ribosomal protein L36a-like (RPL36AL). As is typical for genes encoding ribosomal proteins, there are multiple processed pseudogenes of this gene dispersed throughout the genome. [provided by RefSeq]

**Other Designations** 60S ribosomal protein L36a|ribosomal protein HL44|ribosomal protein L36a-like protein

## Pathway

- [Ribosome](#)