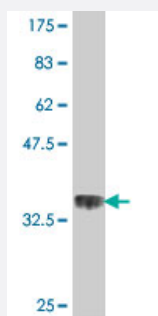


RPL35A polyclonal antibody (A01)

Catalog # H00006165-A01

Size 50 uL

Applications



Western Blot detection against Immunogen (37.11 kDa) .

Specification

Product Description	Mouse polyclonal antibody raised against a partial recombinant RPL35A.
Immunogen	RPL35A (NP_000987, 11 a.a. ~ 110 a.a) partial recombinant protein with GST tag.
Sequence	FAGYKRGLRNQREHTALLKIEGVYARDETEFYLGKRCAYVYKAKNNTVTPGGKPNKTRVWGVTR AHGNSGMVRAKFRSNLPAKAIGHRIRVMLYPSRI
Host	Mouse
Reactivity	Human
Interspecies Antigen Sequence	Mouse (100); Rat (100)
Quality Control Testing	Antibody Reactive Against Recombinant Protein. Western Blot detection against Immunogen (37.11 kDa) .
Storage Buffer	50 % glycerol
Storage Instruction	Store at -20°C or lower. Aliquot to avoid repeated freezing and thawing.

Applications

- Western Blot (Recombinant protein)

[Protocol Download](#)

- ELISA

Gene Info — RPL35A

Entrez GeneID [6165](#)

GeneBank Accession# [NM_000996](#)

Protein Accession# [NP_000987](#)

Gene Name RPL35A

Gene Alias DBA5

Gene Description ribosomal protein L35a

Omim ID [180468](#)

Gene Ontology [Hyperlink](#)

Gene Summary

Ribosomes, the organelles that catalyze protein synthesis, consist of a small 40S subunit and a large 60S subunit. Together these subunits are composed of 4 RNA species and approximately 80 structurally distinct proteins. This gene encodes a ribosomal protein that is a component of the 60S subunit. The protein belongs to the L35AE family of ribosomal proteins. It is located in the cytoplasm. The rat protein has been shown to bind to both initiator and elongator tRNAs, and thus, it is located at the P site, or P and A sites, of the ribosome. Although this gene was originally mapped to chromosome 18, it has been established that it is located at 3q29-qter. Transcript variants utilizing alternative transcription initiation sites and alternative polyA signals exist. As is typical for genes encoding ribosomal proteins, there are multiple processed pseudogenes of this gene dispersed through the genome. [provided by RefSeq]

Other Designations 60S ribosomal protein L35a

Pathway

- [Ribosome](#)

Disease

- [Anemia](#)