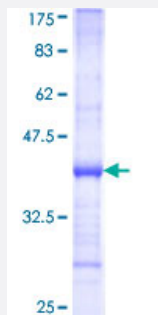


# RPL32 (Human) Recombinant Protein (Q01)

Catalog # H00006161-Q01

Size 25 ug, 10 ug

## Applications



## Specification

<b>Product Description</b>	Human RPL32 partial ORF ( NP_000985, 33 a.a. - 132 a.a.) recombinant protein with GST-tag at N-terminal.
<b>Sequence</b>	RNWRKPRGIDNRVRRRFKQILMPNIGYGSNKKTKHMLPSGFRKFLVHNVKELEVLLMCNKSYCA EIAHNVSSKNRKAIVERAAQLAIRVTNP NARLRSE
<b>Host</b>	Wheat Germ (in vitro)
<b>Theoretical MW (kDa)</b>	36.74
<b>Interspecies Antigen Sequence</b>	Mouse (92)
<b>Preparation Method</b>	<a href="#">in vitro wheat germ expression system</a>
<b>Purification</b>	Glutathione Sepharose 4 Fast Flow
<b>Quality Control Testing</b>	12.5% SDS-PAGE Stained with Coomassie Blue.
<b>Storage Buffer</b>	50 mM Tris-HCl, 10 mM reduced Glutathione, pH=8.0 in the elution buffer.
<b>Storage Instruction</b>	Store at -80°C. Aliquot to avoid repeated freezing and thawing.
<b>Note</b>	Best use within three months from the date of receipt of this protein.

## Applications

- Enzyme-linked Immunoabsorbent Assay
- Western Blot (Recombinant protein)
- Antibody Production
- Protein Array

## Gene Info — RPL32

Entrez GeneID [6161](#)

GeneBank Accession# [NM\\_000994](#)

Protein Accession# [NP\\_000985](#)

Gene Name RPL32

Gene Alias PP9932

Gene Description ribosomal protein L32

Gene Ontology [Hyperlink](#)

**Gene Summary** Ribosomes, the organelles that catalyze protein synthesis, consist of a small 40S subunit and a large 60S subunit. Together these subunits are composed of 4 RNA species and approximately 80 structurally distinct proteins. This gene encodes a ribosomal protein that is a component of the 60S subunit. The protein belongs to the L32E family of ribosomal proteins. It is located in the cytoplasm. Although some studies have mapped this gene to 3q13.3-q21, it is believed to map to 3p25-p24. As is typical for genes encoding ribosomal proteins, there are multiple processed pseudogenes of this gene dispersed through the genome. Alternatively spliced transcript variants encoding the same protein have been observed for this gene. [provided by RefSeq]

**Other Designations** 60S ribosomal protein L32

## Pathway

- [Ribosome](#)