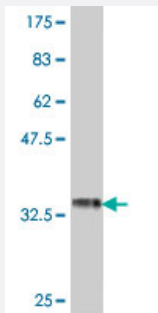


RPL31 polyclonal antibody (A01)

Catalog # H00006160-A01

Size 50 uL

Applications



Western Blot detection against Immunogen (36.01 KDa) .

Specification

Product Description	Mouse polyclonal antibody raised against a partial recombinant RPL31.
Immunogen	RPL31 (NP_000984, 36 a.a. ~ 125 a.a) partial recombinant protein with GST tag.
Sequence	VGFKKRAPRALKEIRKFAMKEMGTPDVRIDTRLNKAVWAKGIRNVPYRIRVRLSRKRNEDEDSPN KLYTLVTYVPVTTFKNLQTVNVN DEN
Host	Mouse
Reactivity	Human
Quality Control Testing	Antibody Reactive Against Recombinant Protein. Western Blot detection against Immunogen (36.01 KDa) .
Storage Buffer	50 % glycerol
Storage Instruction	Store at -20°C or lower. Aliquot to avoid repeated freezing and thawing.

Applications

- Western Blot (Recombinant protein)

[Protocol Download](#)

- ELISA

Gene Info — RPL31

Entrez GeneID [6160](#)

GeneBank Accession# [NM_000993](#)

Protein Accession# [NP_000984](#)

Gene Name RPL31

Gene Alias MGC88191

Gene Description ribosomal protein L31

Gene Ontology [Hyperlink](#)

Gene Summary Ribosomes, the organelles that catalyze protein synthesis, consist of a small 40S subunit and a large 60S subunit. Together these subunits are composed of 4 RNA species and approximately 80 structurally distinct proteins. This gene encodes a ribosomal protein that is a component of the 60S subunit. The protein belongs to the L31E family of ribosomal proteins. It is located in the cytoplasm. Higher levels of expression of this gene in familial adenomatous polyps compared to matched normal tissues have been observed. As is typical for genes encoding ribosomal proteins, there are multiple processed pseudogenes of this gene dispersed through the genome. Alternatively spliced transcript variants encoding distinct isoforms have been found for this gene. [provided by RefSeq]

Other Designations 60S ribosomal protein L31

Pathway

- [Ribosome](#)