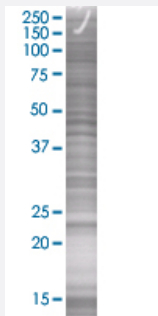


RPL29 293T Cell Transient Overexpression Lysate(Denatured)

Catalog # H00006159-T03

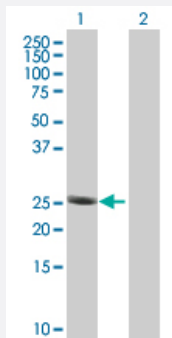
Size 100 uL

Applications



SDS-PAGE Gel

RPL29 transfected lysate



Western Blot

Lane 1: RPL29 transfected lysate (17.49 KDa).

Lane 2: Non-transfected lysate.

Specification

Transfected Cell Line 293T

Plasmid pCMV-RPL29 full-length

Host Human

Theoretical MW (kDa) 17.49

Quality Control Testing Transient overexpression cell lysate was tested with Anti-RPL29 antibody ([H00006159-B01](#)) by Western Blots.
 SDS-PAGE Gel
 RPL29 transfected lysate
 Western Blot
 Lane 1: RPL29 transfected lysate (17.49 KDa).
 Lane 2: Non-transfected lysate.

Storage Buffer	1X Sample Buffer (50 mM Tris-HCl, 2% SDS, 10% glycerol, 300 mM 2-mercaptoethanol, 0.01% Bromophenol blue)
Storage Instruction	Store at -80°C. Aliquot to avoid repeated freezing and thawing.

Applications

- Western Blot

Gene Info — RPL29

Entrez GeneID	6159
GeneBank Accession#	BC008926
Protein Accession#	AAH08926
Gene Name	RPL29
Gene Alias	HIP, HUMRPL29, MGC88589
Gene Description	ribosomal protein L29
Omim ID	601832
Gene Ontology	Hyperlink

Gene Summary	Ribosomes, the organelles that catalyze protein synthesis, consist of a small 40S subunit and a large 60S subunit. Together these subunits are composed of 4 RNA species and approximately 80 structurally distinct proteins. This gene encodes a cytoplasmic ribosomal protein that is a component of the 60S subunit. The protein belongs to the L29E family of ribosomal proteins. The protein is also a peripheral membrane protein expressed on the cell surface that directly binds heparin. Although this gene was previously reported to map to 3q29-qter, it is believed that it is located at 3p21.3-p21.2. As is typical for genes encoding ribosomal proteins, there are multiple processed pseudogenes of this gene dispersed through the genome. [provided by RefSeq]
--------------	-------------------------------------------------------------------------------------------------------------------------------------------------------------------------------------------------------------------------------------------------------------------------------------------------------------------------------------------------------------------------------------------------------------------------------------------------------------------------------------------------------------------------------------------------------------------------------------------------------------------------------------------------------------------------------------------------------------------------------------------------------------------------------------

Other Designations	60S ribosomal protein L29 HP/HS-interacting protein OTTHUMP00000017090 cell surface heparin-binding protein HIP heparin/heparan sulfate-binding protein heparin/heparan sulfate-interacting protein
--------------------	-----------------------------------------------------------------------------------------------------------------------------------------------------------------------------------------------------

Pathway

- [Ribosome](#)