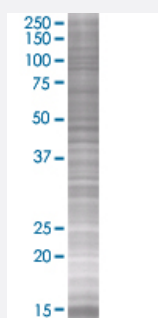


# RPL29 293T Cell Transient Overexpression Lysate(Denatured)

Catalog # H00006159-T02

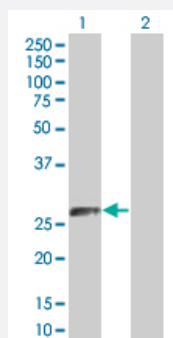
Size 100 uL

## Applications



### SDS-PAGE Gel

RPL29 transfected lysate



### Western Blot

Lane 1: RPL29 transfected lysate ( 17.8 KDa).

Lane 2: Non-transfected lysate.

## Specification

**Transfected Cell Line** 293T

**Plasmid** pCMV-RPL29 full-length

**Host** Human

**Theoretical MW (kDa)** 17.8

**Quality Control Testing** Transient overexpression cell lysate was tested with Anti-RPL29 antibody ([H00006159-B02](#)) by Western Blots.  
SDS-PAGE Gel  
RPL29 transfected lysate  
Western Blot  
Lane 1: RPL29 transfected lysate ( 17.8 KDa).  
Lane 2: Non-transfected lysate.

**Storage Buffer**

1X Sample Buffer (50 mM Tris-HCl, 2% SDS, 10% glycerol, 300 mM 2-mercaptoethanol, 0.01% Bromophenol blue)

**Storage Instruction**

Store at -80°C. Aliquot to avoid repeated freezing and thawing.

## Applications

- Western Blot

## Gene Info — RPL29

**Entrez GeneID**[6159](#)**GeneBank Accession#**[NM\\_000992](#)**Protein Accession#**[NP\\_000983](#)**Gene Name**

RPL29

**Gene Alias**

HIP, HUMRPL29, MGC88589

**Gene Description**

ribosomal protein L29

**Omim ID**[601832](#)**Gene Ontology**[Hyperlink](#)**Gene Summary**

Ribosomes, the organelles that catalyze protein synthesis, consist of a small 40S subunit and a large 60S subunit. Together these subunits are composed of 4 RNA species and approximately 80 structurally distinct proteins. This gene encodes a cytoplasmic ribosomal protein that is a component of the 60S subunit. The protein belongs to the L29E family of ribosomal proteins. The protein is also a peripheral membrane protein expressed on the cell surface that directly binds heparin. Although this gene was previously reported to map to 3q29-qter, it is believed that it is located at 3p21.3-p21.2. As is typical for genes encoding ribosomal proteins, there are multiple processed pseudogenes of this gene dispersed through the genome. [provided by RefSeq]

**Other Designations**

60S ribosomal protein L29|HP/HS-interacting protein|OTTHUMP00000017090|cell surface heparin-binding protein HIP|heparin/heparan sulfate-binding protein|heparin/heparan sulfate-interacting protein

## Pathway

- [Ribosome](#)