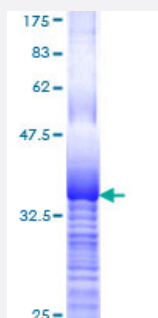


# RPL29 (Human) Recombinant Protein (Q01)

Catalog # H00006159-Q01

Size 25 ug, 10 ug

## Applications



## Specification

<b>Product Description</b>	Human RPL29 partial ORF ( NM_000992, 1 a.a. - 75 a.a.) recombinant protein with GST-tag at N-terminal.
<b>Sequence</b>	MAKSKNHTTHNQSRLKWHNRNGIKKPRSQRYESLKGVDPKFLRNMRFAKKHNKKGLKKMQANNAK AMSARAEAIKAL
<b>Host</b>	Wheat Germ (in vitro)
<b>Theoretical MW (kDa)</b>	33.99
<b>Preparation Method</b>	<a href="#">in vitro wheat germ expression system</a>
<b>Purification</b>	Glutathione Sepharose 4 Fast Flow
<b>Quality Control Testing</b>	12.5% SDS-PAGE Stained with Coomassie Blue.
<b>Storage Buffer</b>	50 mM Tris-HCl, 10 mM reduced Glutathione, pH=8.0 in the elution buffer.
<b>Storage Instruction</b>	Store at -80°C. Aliquot to avoid repeated freezing and thawing.
<b>Note</b>	Best use within three months from the date of receipt of this protein.

## Applications

- Enzyme-linked Immunoabsorbent Assay
- Western Blot (Recombinant protein)
- Antibody Production
- Protein Array

## Gene Info — RPL29

Entrez GeneID [6159](#)

GeneBank Accession# [NM\\_000992](#)

Protein Accession# [NM\\_000992](#)

Gene Name RPL29

Gene Alias HIP, HUMRPL29, MGC88589

Gene Description ribosomal protein L29

Omim ID [601832](#)

Gene Ontology [Hyperlink](#)

**Gene Summary** Ribosomes, the organelles that catalyze protein synthesis, consist of a small 40S subunit and a large 60S subunit. Together these subunits are composed of 4 RNA species and approximately 80 structurally distinct proteins. This gene encodes a cytoplasmic ribosomal protein that is a component of the 60S subunit. The protein belongs to the L29E family of ribosomal proteins. The protein is also a peripheral membrane protein expressed on the cell surface that directly binds heparin. Although this gene was previously reported to map to 3q29-qter, it is believed that it is located at 3p21.3-p21.2. As is typical for genes encoding ribosomal proteins, there are multiple processed pseudogenes of this gene dispersed through the genome. [provided by RefSeq]

**Other Designations** 60S ribosomal protein L29|HP/HS-interacting protein|OTTHUMP00000017090|cell surface heparin-binding protein HIP|heparin/heparan sulfate-binding protein|heparin/heparan sulfate-interacting protein

## Pathway

- [Ribosome](#)