

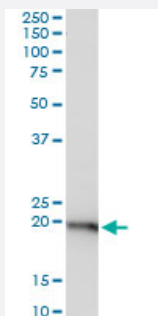
MaxPab®

## RPL29 purified MaxPab mouse polyclonal antibody (B02P)

Catalog # H00006159-B02P

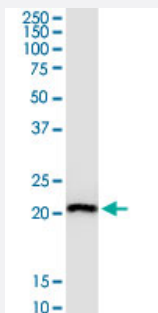
Size 50 ug

### Applications



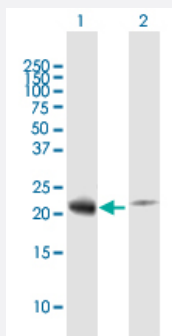
#### Western Blot (Tissue lysate)

RPL29 MaxPab polyclonal antibody. Western Blot analysis of RPL29 expression in human pancreas.



#### Western Blot (Cell lysate)

RPL29 MaxPab polyclonal antibody. Western Blot analysis of RPL29 expression in HeLa.

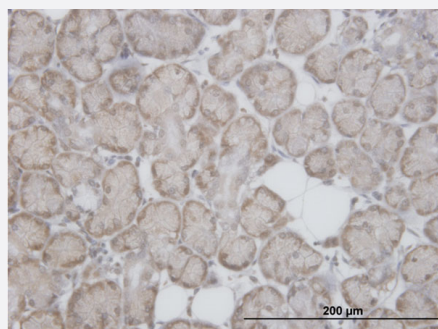


#### Western Blot (Transfected lysate)

Western Blot analysis of RPL29 expression in transfected 293T cell line ([H00006159-T02](#)) by RPL29 MaxPab polyclonal antibody.

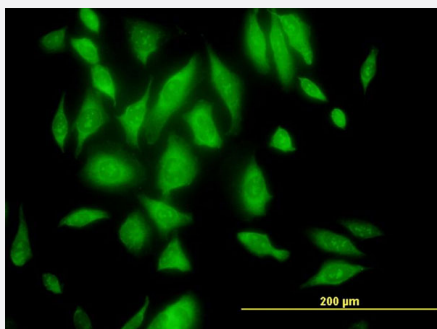
Lane 1: RPL29 transfected lysate(17.49 KDa).

Lane 2: Non-transfected lysate.



#### Immunohistochemistry (Formalin/PFA-fixed paraffin-embedded sections)

Immunoperoxidase of purified MaxPab antibody to RPL29 on formalin-fixed paraffin-embedded human salivary gland. [antibody concentration 3 ug/ml]



## Immunofluorescence

Immunofluorescence of purified MaxPab antibody to RPL29 on HeLa cell.  
[antibody concentration 10 ug/ml]

## Specification

<b>Product Description</b>	Mouse polyclonal antibody raised against a full-length human RPL29 protein.
<b>Immunogen</b>	RPL29 (NP_000983.1, 1 a.a. ~ 157 a.a) full-length human protein.
<b>Sequence</b>	MAKSKNHTTHNQSRLKWHNRNGIKKPRSQRYESLKGVDPKFLRNMRFAKKHNKKGLKKMQANNAK AMSARAEAIKALVKPKPKIPKGVSRKLDRLAYIAHPKLGKRARARIAKGLRLCRPKAKAKAKD QTKAQAAAPASVPAQAPKRTQAPTKASE
<b>Host</b>	Mouse
<b>Reactivity</b>	Human
<b>Quality Control Testing</b>	Antibody reactive against mammalian transfected lysate.
<b>Storage Buffer</b>	In 1x PBS, pH 7.4
<b>Storage Instruction</b>	Store at -20°C or lower. Aliquot to avoid repeated freezing and thawing.

## Applications

- Western Blot (Tissue lysate)

RPL29 MaxPab polyclonal antibody. Western Blot analysis of RPL29 expression in human pancreas.

[Protocol Download](#)

- Western Blot (Cell lysate)

RPL29 MaxPab polyclonal antibody. Western Blot analysis of RPL29 expression in HeLa.

[Protocol Download](#)

- Western Blot (Transfected lysate)

Western Blot analysis of RPL29 expression in transfected 293T cell line ([H00006159-T02](#)) by RPL29 MaxPab polyclonal antibody.

Lane 1: RPL29 transfected lysate(17.49 KDa).

Lane 2: Non-transfected lysate.

[Protocol Download](#)

- Immunohistochemistry (Formalin/PFA-fixed paraffin-embedded sections)

Immunoperoxidase of purified MaxPab antibody to RPL29 on formalin-fixed paraffin-embedded human salivary gland. [antibody concentration 3 ug/ml]

[Protocol Download](#)

- Immunofluorescence

Immunofluorescence of purified MaxPab antibody to RPL29 on HeLa cell. [antibody concentration 10 ug/ml]

## Gene Info — RPL29

Entrez GeneID [6159](#)

GeneBank Accession# [NM\\_000992](#)

Protein Accession# [NP\\_000983.1](#)

Gene Name RPL29

Gene Alias HIP, HUMRPL29, MGC88589

Gene Description ribosomal protein L29

Omim ID [601832](#)

Gene Ontology [Hyperlink](#)

### Gene Summary

Ribosomes, the organelles that catalyze protein synthesis, consist of a small 40S subunit and a large 60S subunit. Together these subunits are composed of 4 RNA species and approximately 80 structurally distinct proteins. This gene encodes a cytoplasmic ribosomal protein that is a component of the 60S subunit. The protein belongs to the L29E family of ribosomal proteins. The protein is also a peripheral membrane protein expressed on the cell surface that directly binds heparin. Although this gene was previously reported to map to 3q29-qter, it is believed that it is located at 3p21.3-p21.2. As is typical for genes encoding ribosomal proteins, there are multiple processed pseudogenes of this gene dispersed through the genome. [provided by RefSeq]

**Other Designations**

60S ribosomal protein L29|HP/HS-interacting protein|OTTHUMP00000017090|cell surface heparin-binding protein HIP|heparin/heparan sulfate-binding protein|heparin/heparan sulfate-interacting protein

---

**Pathway**

- [Ribosome](#)