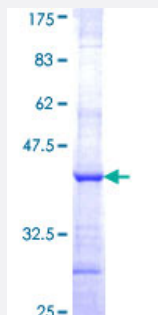


RPL28 (Human) Recombinant Protein (Q01)

Catalog # H00006158-Q01

Size 25 ug, 10 ug

Applications



Specification

Product Description	Human RPL28 partial ORF (NP_000982, 1 a.a. - 100 a.a.) recombinant protein with GST-tag at N-terminal.
Sequence	MSAHLQWMVVRNCSSFLIKRKNQTYSTEPNNLKARNsFRYNGLIHRKTVGVPEAADGKGVVVVVKRRSGQRKPATSYVRTTINKNARATLSSIRHMIRKN
Host	Wheat Germ (in vitro)
Theoretical MW (kDa)	36.74
Interspecies Antigen Sequence	Mouse (99); Rat (99)
Preparation Method	in vitro wheat germ expression system
Purification	Glutathione Sepharose 4 Fast Flow
Quality Control Testing	12.5% SDS-PAGE Stained with Coomassie Blue.
Storage Buffer	50 mM Tris-HCl, 10 mM reduced Glutathione, pH=8.0 in the elution buffer.
Storage Instruction	Store at -80°C. Aliquot to avoid repeated freezing and thawing.
Note	Best use within three months from the date of receipt of this protein.

Applications

- Enzyme-linked Immunoabsorbent Assay
- Western Blot (Recombinant protein)
- Antibody Production
- Protein Array

Gene Info — RPL28

Entrez GeneID [6158](#)

GeneBank Accession# [NM_000991](#)

Protein Accession# [NP_000982](#)

Gene Name RPL28

Gene Alias FLJ43307

Gene Description ribosomal protein L28

Omim ID [603638](#)

Gene Ontology [Hyperlink](#)

Gene Summary Ribosomes, the organelles that catalyze protein synthesis, consist of a small 40S subunit and a large 60S subunit. Together these subunits are composed of 4 RNA species and approximately 80 structurally distinct proteins. This gene encodes a ribosomal protein that is a component of the 60 S subunit. The protein belongs to the L28E family of ribosomal proteins. It is located in the cytoplasm. Variable expression of this gene in colorectal cancers compared to adjacent normal tissues has been observed, although no correlation between the level of expression and the severity of the disease has been found. As is typical for genes encoding ribosomal proteins, there are multiple processed pseudogenes of this gene dispersed through the genome. Alternative splicing results in multiple transcript variants encoding distinct isoforms

Other Designations 60S ribosomal protein L28

Pathway

- [Ribosome](#)