

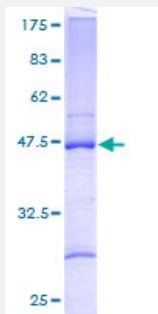
Full-Length

RPL27A (Human) Recombinant Protein (P01)

Catalog # H00006157-P01

Size 25 ug, 10 ug

Applications



Specification

Product Description

Human RPL27A full-length ORF (AAH05326, 1 a.a. - 148 a.a.) recombinant protein with GST-tag at N-terminal.

Sequence

MPSRLRKTRKLRGHVSHGHGRIGKHRKHPGGRGNAGGLHHRINFDKYHPGYFGKVGMMKHYHLK
RNQSFCTVNLDKLWTLVSEQTRVNAAKNKTGAAPIDVVRSGYYKVLGKGKLPKQPVVKAKFFS
RRAEEKIKSVGGACVLVA

Host

Wheat Germ (in vitro)

Theoretical MW (kDa)

42.02

Interspecies Antigen Sequence

Mouse (97); Rat (97)

Preparation Method

[in vitro wheat germ expression system](#)

Purification

Glutathione Sepharose 4 Fast Flow

Quality Control Testing

12.5% SDS-PAGE Stained with Coomassie Blue.

Storage Buffer

50 mM Tris-HCl, 10 mM reduced Glutathione, pH=8.0 in the elution buffer.

Storage Instruction

Store at -80°C. Aliquot to avoid repeated freezing and thawing.

Note

Best use within three months from the date of receipt of this protein.

Applications

- Enzyme-linked Immunoabsorbent Assay
- Western Blot (Recombinant protein)
- Antibody Production
- Protein Array

Gene Info — RPL27A

Entrez GeneID [6157](#)

GeneBank Accession# [BC005326](#)

Protein Accession# [AAH05326](#)

Gene Name RPL27A

Gene Alias FLJ43464, MGC10850, MGC17878, MGC87238

Gene Description ribosomal protein L27a

Omim ID [603637](#)

Gene Ontology [Hyperlink](#)

Gene Summary Ribosomes, the organelles that catalyze protein synthesis, consist of a small 40S subunit and a large 60S subunit. Together these subunits are composed of 4 RNA species and approximately 80 structurally distinct proteins. This gene encodes a ribosomal protein that is a component of the 60S subunit. The protein belongs to the L15P family of ribosomal proteins. It is located in the cytoplasm. Variable expression of this gene in colorectal cancers compared to adjacent normal tissues has been observed, although no correlation between the level of expression and the severity of the disease has been found. As is typical for genes encoding ribosomal proteins, multiple processed pseudogenes derived from this gene are dispersed through the genome. [provided by RefSeq]

Other Designations 60S ribosomal protein L27a

Pathway

- [Ribosome](#)