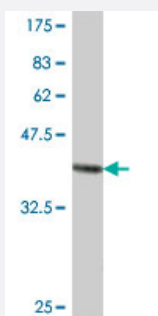


# RPL27A polyclonal antibody (A01)

Catalog # H00006157-A01

Size 50 uL

## Applications



Western Blot detection against Immunogen (37.11 kDa) .

## Specification

<b>Product Description</b>	Mouse polyclonal antibody raised against a partial recombinant RPL27A.
<b>Immunogen</b>	RPL27A (NP_000981, 49 a.a. ~ 148 a.a) partial recombinant protein with GST tag.
<b>Sequence</b>	HPGYFGKVGMMKHYHLKRNSFCPTVNLDKLWTLVSEQTRVNAAKNKTGAAPIIDVVRSGYYKVLG KGKLPKQPVVAKAFFSRRAEKIKSVGGACVLVA
<b>Host</b>	Mouse
<b>Reactivity</b>	Human
<b>Interspecies Antigen Sequence</b>	Mouse (97); Rat (96)
<b>Quality Control Testing</b>	Antibody Reactive Against Recombinant Protein. Western Blot detection against Immunogen (37.11 kDa) .
<b>Storage Buffer</b>	50 % glycerol
<b>Storage Instruction</b>	Store at -20°C or lower. Aliquot to avoid repeated freezing and thawing.

## Applications

- Western Blot (Recombinant protein)

[Protocol Download](#)

- ELISA

## Gene Info — RPL27A

Entrez GeneID [6157](#)

GeneBank Accession# [NM\\_000990](#)

Protein Accession# [NP\\_000981](#)

Gene Name RPL27A

Gene Alias FLJ43464, MGC10850, MGC17878, MGC87238

Gene Description ribosomal protein L27a

Omim ID [603637](#)

Gene Ontology [Hyperlink](#)

**Gene Summary** Ribosomes, the organelles that catalyze protein synthesis, consist of a small 40S subunit and a large 60S subunit. Together these subunits are composed of 4 RNA species and approximately 80 structurally distinct proteins. This gene encodes a ribosomal protein that is a component of the 60 S subunit. The protein belongs to the L15P family of ribosomal proteins. It is located in the cytoplasm. Variable expression of this gene in colorectal cancers compared to adjacent normal tissues has been observed, although no correlation between the level of expression and the severity of the disease has been found. As is typical for genes encoding ribosomal proteins, multiple processed pseudogenes derived from this gene are dispersed through the genome. [provided by RefSeq]

**Other Designations** 60S ribosomal protein L27a

## Pathway

- [Ribosome](#)