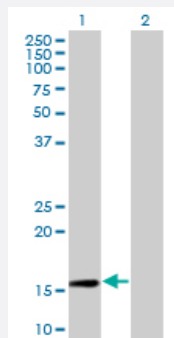


# RPL30 monoclonal antibody (M01), clone 4E6

Catalog # H00006156-M01

Size 100 ug

## Applications

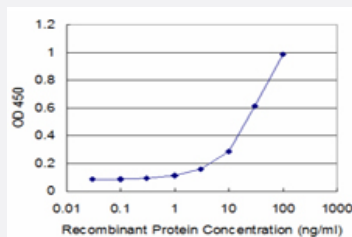


### Western Blot (Transfected lysate)

Western Blot analysis of RPL30 expression in transfected 293T cell line by RPL30 monoclonal antibody (M01), clone 4E6.

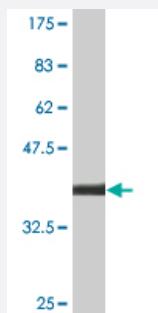
Lane 1: RPL30 transfected lysate (12.8 KDa).

Lane 2: Non-transfected lysate.



### Sandwich ELISA (Recombinant protein)

Detection limit for recombinant GST tagged RPL30 is approximately 1 ng/ml as a capture antibody.



Western Blot detection against Immunogen (38.39 KDa) .

## Specification

### Product Description

Mouse monoclonal antibody raised against a full-length recombinant RPL30.

<b>Immunogen</b>	RPL30 (AAH32700, 1 a.a. ~ 115 a.a) full-length recombinant protein with GST tag. MW of the GST tag alone is 26 KDa.
<b>Sequence</b>	MVAAKKTCKKSLESINSRLQLVMKSGKYVLGYKQTLKMRQGGKAKLVILANNCPALRKSEIEYYAMLA KTGVHHYSGNNIELGTACGKYRVCTLAIDPGDSDIIRSMPEQTGEK
<b>Host</b>	Mouse
<b>Reactivity</b>	Human
<b>Isotype</b>	IgG2a Kappa
<b>Quality Control Testing</b>	Antibody Reactive Against Recombinant Protein. Western Blot detection against Immunogen (38.39 KDa) .
<b>Storage Buffer</b>	In 1x PBS, pH 7.4
<b>Storage Instruction</b>	Store at -20°C or lower. Aliquot to avoid repeated freezing and thawing.

## Applications

- Western Blot (Transfected lysate)

Western Blot analysis of RPL30 expression in transfected 293T cell line by RPL30 monoclonal antibody (M01), clone 4E6.

Lane 1: RPL30 transfected lysate(12.8 KDa).

Lane 2: Non-transfected lysate.

[Protocol Download](#)

- Western Blot (Recombinant protein)

[Protocol Download](#)

- Sandwich ELISA (Recombinant protein)

Detection limit for recombinant GST tagged RPL30 is approximately 1ng/ml as a capture antibody.

[Protocol Download](#)

- ELISA

## Gene Info — RPL30

Entrez GeneID [6156](#)

GeneBank Accession# [BC032700](#)

Protein Accession#	<a href="#">AAH32700</a>
Gene Name	RPL30
Gene Alias	-
Gene Description	ribosomal protein L30
Omim ID	<a href="#">180467</a>
Gene Ontology	<a href="#">Hyperlink</a>
Gene Summary	<p>Ribosomes, the organelles that catalyze protein synthesis, consist of a small 40S subunit and a large 60S subunit. Together these subunits are composed of 4 RNA species and approximately 80 structurally distinct proteins. This gene encodes a ribosomal protein that is a component of the 60S subunit. The protein belongs to the L30E family of ribosomal proteins. It is located in the cytoplasm. This gene is co-transcribed with the U72 small nucleolar RNA gene, which is located in its fourth intron. As is typical for genes encoding ribosomal proteins, there are multiple processed pseudogenes of this gene dispersed through the genome. [provided by RefSeq]</p>
Other Designations	60S ribosomal protein L30

## Pathway

- [Ribosome](#)