

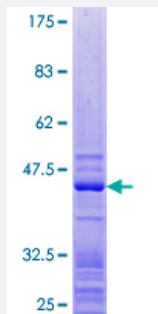
Full-Length

## RPL27 (Human) Recombinant Protein (P01)

Catalog # H00006155-P01

Size 25 ug, 10 ug

### Applications



### Specification

<b>Product Description</b>	Human RPL27 full-length ORF ( NP_000979.1, 1 a.a. - 136 a.a.) recombinant protein with GST-tag at N-terminal.
<b>Sequence</b>	MGKFMKPGKVVLVLAGRYSGRKAVIVKNIDGTSRDPYSHALVAGIDRYPRKVTAAMGKKKIAKR SKIKSFVKVYNYNHLMPTRYSDIPLDKTVVNKDVFRDPALKRKARREAKVKFEERYKTGKNKWF FQKLRF
<b>Host</b>	Wheat Germ (in vitro)
<b>Theoretical MW (kDa)</b>	42.2
<b>Preparation Method</b>	<a href="#">in vitro wheat germ expression system</a>
<b>Purification</b>	Glutathione Sepharose 4 Fast Flow
<b>Quality Control Testing</b>	12.5% SDS-PAGE Stained with Coomassie Blue.
<b>Storage Buffer</b>	50 mM Tris-HCl, 10 mM reduced Glutathione, pH=8.0 in the elution buffer.
<b>Storage Instruction</b>	Store at -80°C. Aliquot to avoid repeated freezing and thawing.
<b>Note</b>	Best use within three months from the date of receipt of this protein.

## Applications

- Enzyme-linked Immunoabsorbent Assay
- Western Blot (Recombinant protein)
- Antibody Production
- Protein Array

## Gene Info — RPL27

Entrez GeneID [6155](#)

GeneBank Accession# [NM\\_000988.3](#)

Protein Accession# [NP\\_000979.1](#)

Gene Name RPL27

Gene Alias -

Gene Description ribosomal protein L27

Omim ID [607526](#)

Gene Ontology [Hyperlink](#)

**Gene Summary** Ribosomes, the organelles that catalyze protein synthesis, consist of a small 40S subunit and a large 60S subunit. Together these subunits are composed of 4 RNA species and approximately 80 structurally distinct proteins. This gene encodes a ribosomal protein that is a component of the 60 S subunit. The protein belongs to the L27E family of ribosomal proteins. It is located in the cytoplasm. As is typical for genes encoding ribosomal proteins, there are multiple processed pseudogenes of this gene dispersed through the genome. [provided by RefSeq]

**Other Designations** 60S ribosomal protein L27

## Pathway

- [Ribosome](#)