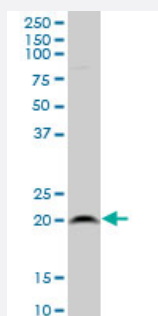


RPL21 polyclonal antibody (A01)

Catalog # H00006144-A01

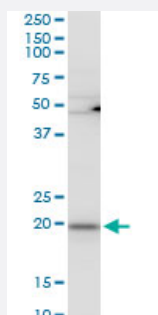
Size 50 uL

Applications



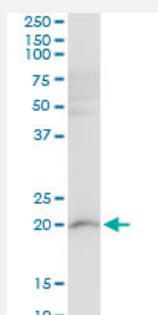
Western Blot (Cell lysate)

RPL21 polyclonal antibody (A01), Lot # 051220JC01 Western Blot analysis of RPL21 expression in HepG2 (Cat # L019V1).



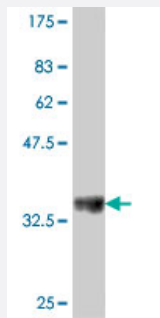
Western Blot (Cell lysate)

RPL21 polyclonal antibody (A01), Lot # 051220JC01. Western Blot analysis of RPL21 expression in Raw 264.7.



Western Blot (Cell lysate)

RPL21 polyclonal antibody (A01), Lot # 051220JC01. Western Blot analysis of RPL21 expression in NIH/3T3.



Western Blot detection against Immunogen (35.35 KDa) .

Specification

Product Description	Mouse polyclonal antibody raised against a partial recombinant RPL21.
Immunogen	RPL21 (NP_000973, 2 a.a. ~ 85 a.a) partial recombinant protein with GST tag.
Sequence	TNTKGKRRGTRYMFSPFRKHGVVPLATYMRYYKKGDIVDIKGMGTVQKGMPHKCYHGKTGRVYN VTQHAVGMVVKQVKGKIL
Host	Mouse
Reactivity	Human, Mouse
Interspecies Antigen Sequence	Mouse (99); Rat (99)
Quality Control Testing	Antibody Reactive Against Recombinant Protein. Western Blot detection against Immunogen (35.35 KDa) .
Storage Buffer	50 % glycerol
Storage Instruction	Store at -20°C or lower. Aliquot to avoid repeated freezing and thawing.

Applications

- Western Blot (Cell lysate)
 RPL21 polyclonal antibody (A01), Lot # 051220JC01 Western Blot analysis of RPL21 expression in HepG2 (Cat # L019V1).
[Protocol Download](#)
- Western Blot (Cell lysate)
 RPL21 polyclonal antibody (A01), Lot # 051220JC01. Western Blot analysis of RPL21 expression in Raw 264.7.
[Protocol Download](#)

- Western Blot (Cell lysate)

RPL21 polyclonal antibody (A01), Lot # 051220JC01. Western Blot analysis of RPL21 expression in NIH/3T3.

[Protocol Download](#)

- Western Blot (Recombinant protein)

[Protocol Download](#)

- ELISA

Gene Info — RPL21

Entrez GeneID [6144](#)

GeneBank Accession# [NM_000982](#)

Protein Accession# [NP_000973](#)

Gene Name RPL21

Gene Alias DKFZp686C06101, FLJ27458, L21, MGC104274, MGC104275, MGC71252

Gene Description ribosomal protein L21

Omim ID [603636](#)

Gene Ontology [Hyperlink](#)

Gene Summary Ribosomes, the organelles that catalyze protein synthesis, consist of a small 40S subunit and a large 60S subunit. Together these subunits are composed of 4 RNA species and approximately 80 structurally distinct proteins. This gene encodes a ribosomal protein that is a component of the 60 S subunit. The protein belongs to the L21E family of ribosomal proteins. It is located in the cytoplasm. As is typical for genes encoding ribosomal proteins, there are multiple processed pseudogenes of this gene dispersed through the genome. [provided by RefSeq]

Other Designations 60S ribosomal protein L21|OTTHUMP00000018163|OTTHUMP00000018164|OTTHUMP00000018165|OTTHUMP00000018166

Pathway

- [Ribosome](#)