

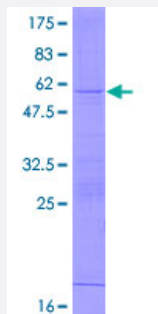
Full-Length

RPL19 (Human) Recombinant Protein (P01)

Catalog # H00006143-P01

Size 25 ug, 10 ug

Applications



Specification

| | |
|--------------------------------|--|
| Product Description | Human RPL19 full-length ORF (NP_000972.1, 1 a.a. - 196 a.a.) recombinant protein with GST-tag at N-terminal. |
| Sequence | MSMLRLQKRLASSVLRCGKKKVWLPNETNEIANANSRQQIRKLIKDGLIIRKPVTVHSRARCCKN TLARRKGRHMGIGKRKGTANARMPEKVTWMMRMRILRRLRRYRESKKIDRHMYSLYLKVKGNV FKNKRILMEHIHKLKADKARKKLLADQAEARRSKTKEARKRREERLQAKKEEIIKTLKSKEEETKK |
| Host | Wheat Germ (in vitro) |
| Theoretical MW (kDa) | 49.9 |
| Preparation Method | in vitro wheat germ expression system |
| Purification | Glutathione Sepharose 4 Fast Flow |
| Quality Control Testing | 12.5% SDS-PAGE Stained with Coomassie Blue. |
| Storage Buffer | 50 mM Tris-HCl, 10 mM reduced Glutathione, pH=8.0 in the elution buffer. |
| Storage Instruction | Store at -80°C. Aliquot to avoid repeated freezing and thawing. |
| Note | Best use within three months from the date of receipt of this protein. |

Applications

- Enzyme-linked Immunoabsorbent Assay
- Western Blot (Recombinant protein)
- Antibody Production
- Protein Array

Gene Info — RPL19

Entrez GeneID [6143](#)

GeneBank Accession# [NM_000981.3](#)

Protein Accession# [NP_000972.1](#)

Gene Name RPL19

Gene Alias DKFZp779D216, FLJ27452, MGC71997

Gene Description ribosomal protein L19

Omim ID [180466](#)

Gene Ontology [Hyperlink](#)

Gene Summary Ribosomes, the organelles that catalyze protein synthesis, consist of a small 40S subunit and a large 60S subunit. Together these subunits are composed of 4 RNA species and approximately 80 structurally distinct proteins. This gene encodes a ribosomal protein that is a component of the 60 S subunit. The protein belongs to the L19E family of ribosomal proteins. It is located in the cytoplasm. As is typical for genes encoding ribosomal proteins, there are multiple processed pseudogenes of this gene dispersed through the genome. [provided by RefSeq]

Other Designations 60S ribosomal protein L19|ribosomal protein L19, cytosolic, N-terminus truncated

Pathway

- [Ribosome](#)