

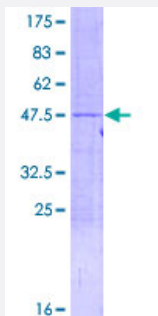
Full-Length

RPL18A (Human) Recombinant Protein (P01)

Catalog # H00006142-P01

Size 25 ug, 10 ug

Applications



Specification

Product Description

Human RPL18A full-length ORF (NP_000971.1, 1 a.a. - 176 a.a.) recombinant protein with GST-tag at N-terminal.

Sequence

MKASGTLREYKVVGRCLPTPKCHTPPLYRMRIAPNHVVAKSRLFVSQLKKMKKSSGEIVYCG
QVFEKSPLRVKNFGWLRYSRSGTHNMYREYRDLTTAGAVTQCYRDMGARHRARAHSIQIMKVE
EIAASKCRRPAVKQFHDSKIKFPLPHRVLRRQHKPRFTTKRPNTFF

Host

Wheat Germ (in vitro)

Theoretical MW (kDa)

47.2

Interspecies Antigen Sequence

Mouse (99); Rat (99)

Preparation Method

[in vitro wheat germ expression system](#)

Purification

Glutathione Sepharose 4 Fast Flow

Quality Control Testing

12.5% SDS-PAGE Stained with Coomassie Blue.

Storage Buffer

50 mM Tris-HCl, 10 mM reduced Glutathione, pH=8.0 in the elution buffer.

Storage Instruction

Store at -80°C. Aliquot to avoid repeated freezing and thawing.

Note

Best use within three months from the date of receipt of this protein.

Applications

- Enzyme-linked Immunoabsorbent Assay
- Western Blot (Recombinant protein)
- Antibody Production
- Protein Array

Gene Info — RPL18A

Entrez GeneID [6142](#)

GeneBank Accession# [NM_000980.2](#)

Protein Accession# [NP_000971.1](#)

Gene Name RPL18A

Gene Alias -

Gene Description ribosomal protein L18a

Omim ID [604178](#)

Gene Ontology [Hyperlink](#)

Gene Summary Ribosomes, the organelles that catalyze protein synthesis, consist of a small 40S subunit and a large 60S subunit. Together these subunits are composed of 4 RNA species and approximately 80 structurally distinct proteins. This gene encodes a ribosomal protein that is a component of the 60S subunit. The protein belongs to the L18AE family of ribosomal proteins. It is located in the cytoplasm. This gene is co-transcribed with the U68 snoRNA, which is located in its third intron. As is typical for genes encoding ribosomal proteins, there are multiple processed pseudogenes of this gene dispersed through the genome. [provided by RefSeq]

Other Designations 60S ribosomal protein L18a|ribosomal protein L18a-like protein

Pathway

- [Ribosome](#)