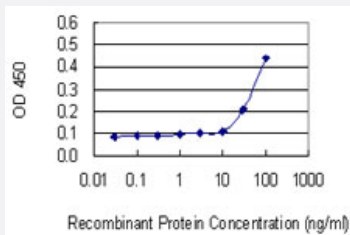


RPL18A monoclonal antibody (M02), clone 3B7

Catalog # H00006142-M02

Size 100 ug

Applications



Sandwich ELISA (Recombinant protein)

Detection limit for recombinant GST tagged RPL18A is 10 ng/ml as a capture antibody.

Specification

Product Description	Mouse monoclonal antibody raised against a partial recombinant RPL18A.
Immunogen	RPL18A (NP_000971.1, 77 a.a. ~ 176 a.a) partial recombinant protein with GST tag. MW of the GST tag alone is 26 KDa.
Sequence	NFGIWLRYDSRSGTHNMYREYRDLTTAGAVTQCYRDMGARHRARAHSIQIMKVEEIAASKCRRPA VKQFHDSKIKFPLPHRVLRRQHKPRFTTKRPNTFF
Host	Mouse
Reactivity	Human
Interspecies Antigen Sequence	Mouse (99); Rat (99)
Isotype	IgG2a Kappa
Quality Control Testing	Antibody Reactive Against Recombinant Protein.
Storage Buffer	In 1x PBS, pH 7.4
Storage Instruction	Store at -20°C or lower. Aliquot to avoid repeated freezing and thawing.

Applications

- Sandwich ELISA (Recombinant protein)

Detection limit for recombinant GST tagged RPL18A is 10 ng/ml as a capture antibody.

[Protocol Download](#)

- ELISA

Gene Info — RPL18A

Entrez GeneID	6142
---------------	----------------------

GeneBank Accession#	NM_000980
---------------------	---------------------------

Protein Accession#	NP_000971.1
--------------------	-----------------------------

Gene Name	RPL18A
-----------	--------

Gene Alias	-
------------	---

Gene Description	ribosomal protein L18a
------------------	------------------------

Omim ID	604178
---------	------------------------

Gene Ontology	Hyperlink
---------------	---------------------------

Gene Summary	Ribosomes, the organelles that catalyze protein synthesis, consist of a small 40S subunit and a large 60S subunit. Together these subunits are composed of 4 RNA species and approximately 80 structurally distinct proteins. This gene encodes a ribosomal protein that is a component of the 60S subunit. The protein belongs to the L18AE family of ribosomal proteins. It is located in the cytoplasm. This gene is co-transcribed with the U68 snoRNA, which is located in its third intron. As is typical for genes encoding ribosomal proteins, there are multiple processed pseudogenes of this gene dispersed through the genome. [provided by RefSeq]
--------------	-----------------------------------------------------------------------------------------------------------------------------------------------------------------------------------------------------------------------------------------------------------------------------------------------------------------------------------------------------------------------------------------------------------------------------------------------------------------------------------------------------------------------------------------------------------------------------------------------------------------------------------------------------------------

Other Designations	60S ribosomal protein L18a ribosomal protein L18a-like protein
--------------------	----------------------------------------------------------------

Pathway

- [Ribosome](#)