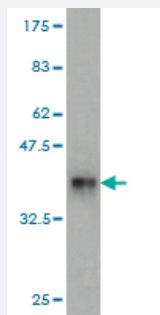


RPL18 monoclonal antibody (M01), clone 3D5

Catalog # H00006141-M01

Size 100 ug

Applications



Western Blot detection against Immunogen (36.63 KDa) .

Specification

Product Description	Mouse monoclonal antibody raised against a partial recombinant RPL18.
Immunogen	RPL18 (NP_000970, 90 a.a. ~ 188 a.a) partial recombinant protein with GST tag. MW of the GST tag alone is 26 KDa.
Sequence	VRVQEVPKLKVCALRVTSRARSRLRAGGKILTFDQLALDSPKGC GTVLLSGPRKGREYRHF GK APGTPHSHTKPYVR SKGRKFERARGRRASRGYKN
Host	Mouse
Reactivity	Human
Isotype	IgG2a Kappa
Quality Control Testing	Antibody Reactive Against Recombinant Protein. Western Blot detection against Immunogen (36.63 KDa) .
Storage Buffer	In 1x PBS, pH 7.4
Storage Instruction	Store at -20°C or lower. Aliquot to avoid repeated freezing and thawing.

Applications

- Western Blot (Recombinant protein)

[Protocol Download](#)

- ELISA

Gene Info — RPL18

Entrez GeneID [6141](#)

GeneBank Accession# [NM_000979](#)

Protein Accession# [NP_000970](#)

Gene Name RPL18

Gene Alias -

Gene Description ribosomal protein L18

Omim ID [604179](#)

Gene Ontology [Hyperlink](#)

Gene Summary Ribosomes, the organelles that catalyze protein synthesis, consist of a small 40S subunit and a large 60S subunit. Together these subunits are composed of 4 RNA species and approximately 80 structurally distinct proteins. This gene encodes a ribosomal protein that is a component of the 60S subunit. The protein belongs to the L18E family of ribosomal proteins. It is located in the cytoplasm. As is typical for genes encoding ribosomal proteins, there are multiple processed pseudogenes of this gene dispersed through the genome. [provided by RefSeq]

Other Designations 60S ribosomal protein L18

Pathway

- [Ribosome](#)

Disease

- [Cardiovascular Diseases](#)
- [Diabetes Mellitus](#)
- [Edema](#)