

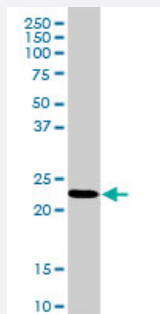
MaxPab®

RPL18 purified MaxPab rabbit polyclonal antibody (D01P)

Catalog # H00006141-D01P

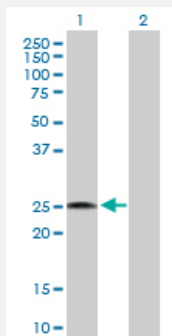
Size 100 ug

Applications



Western Blot (Cell lysate)

RPL18 MaxPab rabbit polyclonal antibody. Western Blot analysis of RPL18 expression in HepG2.



Western Blot (Transfected lysate)

Western Blot analysis of RPL18 expression in transfected 293T cell line ([H00006141-T02](#)) by RPL18 MaxPab polyclonal antibody.

Lane 1: RPL18 transfected lysate(21.60 KDa).

Lane 2: Non-transfected lysate.

Specification

Product Description	Rabbit polyclonal antibody raised against a full-length human RPL18 protein.
Immunogen	RPL18 (NP_000970.1, 1 a.a. ~ 188 a.a) full-length human protein.
Sequence	MGVDIRHNKDRKVRKEPKSQDIYLRLLVKLYRFLARRTNSTFNQVVLKRLFMSRTNRPPLSLSRM IRKMKLPGRENKTAVVVGTTDDVVRVQEVPLKVKALRVTSRARSRLRAGGKILTFDQLALDSPK GCGTVLLSGPRKGREVVYRHF GKAPGTPHSHTKPYVRSKGRKFERARGRRASRGYKN
Host	Rabbit
Reactivity	Human

Quality Control Testing	Antibody reactive against mammalian transfected lysate.
Storage Buffer	In 1x PBS, pH 7.4
Storage Instruction	Store at -20°C or lower. Aliquot to avoid repeated freezing and thawing.

Applications

- Western Blot (Cell lysate)

RPL18 MaxPab rabbit polyclonal antibody. Western Blot analysis of RPL18 expression in HepG2.

[Protocol Download](#)

- Western Blot (Transfected lysate)

Western Blot analysis of RPL18 expression in transfected 293T cell line ([H00006141-T02](#)) by RPL18 MaxPab polyclonal antibody.

Lane 1: RPL18 transfected lysate(21.60 KDa).

Lane 2: Non-transfected lysate.

[Protocol Download](#)

Gene Info — RPL18

Entrez GeneID	6141
GeneBank Accession#	NM_000979.2
Protein Accession#	NP_000970.1
Gene Name	RPL18
Gene Alias	-
Gene Description	ribosomal protein L18
Omim ID	604179
Gene Ontology	Hyperlink

Gene Summary

Ribosomes, the organelles that catalyze protein synthesis, consist of a small 40S subunit and a large 60S subunit. Together these subunits are composed of 4 RNA species and approximately 80 structurally distinct proteins. This gene encodes a ribosomal protein that is a component of the 60S subunit. The protein belongs to the L18E family of ribosomal proteins. It is located in the cytoplasm. As is typical for genes encoding ribosomal proteins, there are multiple processed pseudogenes of this gene dispersed through the genome. [provided by RefSeq]

Other Designations60S ribosomal protein L18

Pathway

- [Ribosome](#)

Disease

- [Cardiovascular Diseases](#)
- [Diabetes Mellitus](#)
- [Edema](#)