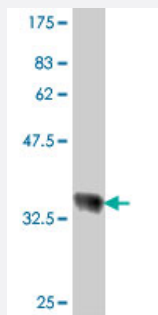


# RPL18 polyclonal antibody (A01)

Catalog # H00006141-A01

Size 50 uL

## Applications



Western Blot detection against Immunogen (37 KDa) .

## Specification

<b>Product Description</b>	Mouse polyclonal antibody raised against a partial recombinant RPL18.
<b>Immunogen</b>	RPL18 (NP_000970, 90 a.a. ~ 188 a.a) partial recombinant protein with GST tag.
<b>Sequence</b>	VRVQEVPKLVKALRVTSRARSRLRAGGKILTFDQLALDSPKGCGTVLLSGPRKGREYRHFVK APGTPHSHTKPYVRSGRKFERRARRASRGYKN
<b>Host</b>	Mouse
<b>Reactivity</b>	Human
<b>Quality Control Testing</b>	Antibody Reactive Against Recombinant Protein. Western Blot detection against Immunogen (37 KDa) .
<b>Storage Buffer</b>	50 % glycerol
<b>Storage Instruction</b>	Store at -20°C or lower. Aliquot to avoid repeated freezing and thawing.

## Applications

- Western Blot (Recombinant protein)

[Protocol Download](#)

- ELISA

## Gene Info — RPL18

Entrez GeneID [6141](#)

GeneBank Accession# [NM\\_000979](#)

Protein Accession# [NP\\_000970](#)

Gene Name RPL18

Gene Alias -

Gene Description ribosomal protein L18

Omim ID [604179](#)

Gene Ontology [Hyperlink](#)

**Gene Summary** Ribosomes, the organelles that catalyze protein synthesis, consist of a small 40S subunit and a large 60S subunit. Together these subunits are composed of 4 RNA species and approximately 80 structurally distinct proteins. This gene encodes a ribosomal protein that is a component of the 60 S subunit. The protein belongs to the L18E family of ribosomal proteins. It is located in the cytoplasm. As is typical for genes encoding ribosomal proteins, there are multiple processed pseudogenes of this gene dispersed through the genome. [provided by RefSeq]

**Other Designations** 60S ribosomal protein L18

## Publication Reference

- [Genetic ablation of ataxin-2 increases several global translation factors in their transcript abundance but decreases translation rate.](#)

Fittschen M, Lastres-Becker I, Halbach MV, Damrath E, Gispert S, Azizov M, Walter M, Muller S, Auburger G.

Neurogenetics 2015 Jul; 16(3):181.

Application: WB-Ti, Mouse, Liver

## Pathway

- [Ribosome](#)

## Disease

- [Cardiovascular Diseases](#)
- [Diabetes Mellitus](#)
- [Edema](#)