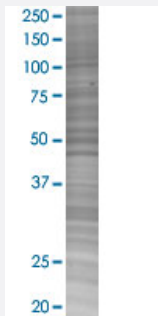


# RPL17 293T Cell Transient Overexpression Lysate(Denatured)

Catalog # H00006139-T03

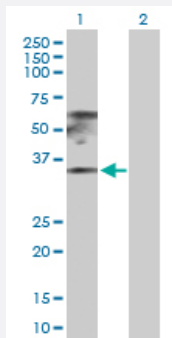
Size 100 uL

## Applications



### SDS-PAGE Gel

RPL17 transfected lysate.



### Western Blot

Lane 1: RPL17 transfected lysate ( 21.40 KDa)

Lane 2: Non-transfected lysate.

## Specification

**Transfected Cell Line** 293T

**Plasmid** pCMV-RPL17 full-length

**Host** Human

**Theoretical MW (kDa)** 21.4

**Quality Control Testing** Transient overexpression cell lysate was tested with Anti-RPL17 antibody ([H00006139-D01P](#)) by Western Blots.  
 SDS-PAGE Gel  
 RPL17 transfected lysate.  
 Western Blot  
 Lane 1: RPL17 transfected lysate ( 21.40 KDa)  
 Lane 2: Non-transfected lysate.

**Storage Buffer**

1X Sample Buffer (50 mM Tris-HCl, 2% SDS, 10% glycerol, 300 mM 2-mercaptoethanol, 0.01% Bromophenol blue)

**Storage Instruction**

Store at -80°C. Aliquot to avoid repeated freezing and thawing.

## Applications

- Western Blot

## Gene Info — RPL17

**Entrez GeneID**[6139](#)**GeneBank Accession#**[NM\\_000985](#)**Protein Accession#**[NP\\_000976.1](#)**Gene Name**

RPL17

**Gene Alias**

FLJ92089, MGC117162, rpL23

**Gene Description**

ribosomal protein L17

**Omim ID**[603661](#)**Gene Ontology**[Hyperlink](#)**Gene Summary**

Ribosomes, the organelles that catalyze protein synthesis, consist of a small 40S subunit and a large 60S subunit. Together these subunits are composed of 4 RNA species and approximately 80 structurally distinct proteins. This gene encodes a ribosomal protein that is a component of the 60S subunit. The protein belongs to the L22P family of ribosomal proteins. It is located in the cytoplasm. This gene has been referred to as rpL23 because the encoded protein shares amino acid identity with ribosomal protein L23 from *Halobacterium marismortui*; however, its official symbol is RPL17. Two alternative splice variants have been observed, each encoding the same protein. As is typical for genes encoding ribosomal proteins, there are multiple processed pseudogenes of this gene dispersed through the genome. [provided by RefSeq]

**Other Designations**

60S ribosomal protein L17|gene encoding putative NFkB activating protein

## Pathway

- [Ribosome](#)