

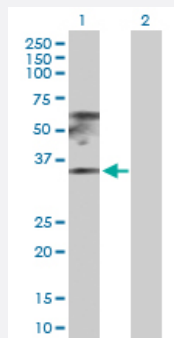
MaxPab®

RPL17 purified MaxPab rabbit polyclonal antibody (D01P)

Catalog # H00006139-D01P

Size 100 ug

Applications



Western Blot (Transfected lysate)

Western Blot analysis of RPL17 expression in transfected 293T cell line ([H00006139-T03](#)) by RPL17 MaxPab polyclonal antibody.

Lane 1: RPL17 transfected lysate(21.40 KDa).

Lane 2: Non-transfected lysate.

Specification

Product Description	Rabbit polyclonal antibody raised against a full-length human RPL17 protein.
Immunogen	RPL17 (NP_000976.1, 1 a.a. ~ 184 a.a) full-length human protein.
Sequence	MVRYSLDPENPTKSCKSRGSNLRVHFKNTRETAQAIGMHIRKATKYLKDVTLQKQCVPFRRYNG GVGRCAQAKQWGWWTQGRWPKKSAEFLHMLKNAESNAELKGLDVDLSLVIEHIQVNKAPKMRRR TYRAHGRINPYMSSPCHIEMILTEKEQVMPKPEEEVAQKKKISQKKLKKQKLMARE
Host	Rabbit
Reactivity	Human
Quality Control Testing	Antibody reactive against mammalian transfected lysate.
Storage Buffer	In 1x PBS, pH 7.4
Storage Instruction	Store at -20°C or lower. Aliquot to avoid repeated freezing and thawing.

Applications

- Western Blot (Transfected lysate)

Western Blot analysis of RPL17 expression in transfected 293T cell line ([H00006139-T03](#)) by RPL17 MaxPab polyclonal antibody.

Lane 1: RPL17 transfected lysate(21.40 KDa).

Lane 2: Non-transfected lysate.

[Protocol Download](#)

Gene Info — RPL17

Entrez GeneID [6139](#)

GeneBank Accession# [NM_000985](#)

Protein Accession# [NP_000976.1](#)

Gene Name RPL17

Gene Alias FLJ92089, MGC117162, rpL23

Gene Description ribosomal protein L17

Omim ID [603661](#)

Gene Ontology [Hyperlink](#)

Gene Summary Ribosomes, the organelles that catalyze protein synthesis, consist of a small 40S subunit and a large 60S subunit. Together these subunits are composed of 4 RNA species and approximately 80 structurally distinct proteins. This gene encodes a ribosomal protein that is a component of the 60 S subunit. The protein belongs to the L22P family of ribosomal proteins. It is located in the cytoplasm. This gene has been referred to as rpL23 because the encoded protein shares amino acid identity with ribosomal protein L23 from *Halobacterium marismortui*; however, its official symbol is RPL17. Two alternative splice variants have been observed, each encoding the same protein. As is typical for genes encoding ribosomal proteins, there are multiple processed pseudogenes of this gene dispersed through the genome. [provided by RefSeq]

Other Designations 60S ribosomal protein L17|gene encoding putative NFkB activating protein

Pathway

- [Ribosome](#)