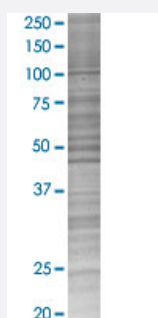


RPL15 293T Cell Transient Overexpression Lysate(Denatured)

Catalog # H00006138-T02

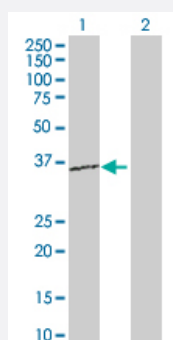
Size 100 uL

Applications



SDS-PAGE Gel

RPL15 transfected lysate.



Western Blot

Lane 1: RPL15 transfected lysate (24.10 KDa)

Lane 2: Non-transfected lysate.

Specification

Transfected Cell Line 293T

Plasmid pCMV-RPL15 full-length

Host Human

Theoretical MW (kDa) 24.1

Quality Control Testing Transient overexpression cell lysate was tested with Anti-RPL15 antibody ([H00006138-D01P](#)) by Western Blots.
 SDS-PAGE Gel
 RPL15 transfected lysate.
 Western Blot
 Lane 1: RPL15 transfected lysate (24.10 KDa)
 Lane 2: Non-transfected lysate.

Storage Buffer	1X Sample Buffer (50 mM Tris-HCl, 2% SDS, 10% glycerol, 300 mM 2-mercaptoethanol, 0.01% Bromophenol blue)
Storage Instruction	Store at -80°C. Aliquot to avoid repeated freezing and thawing.

Applications

- Western Blot

Gene Info — RPL15

Entrez GeneID	6138
GeneBank Accession#	NM_002948.2
Protein Accession#	NP_002939.2
Gene Name	RPL15
Gene Alias	EC45, FLJ26304, MGC88603, RPL10, RPLY10, RPYL10
Gene Description	ribosomal protein L15
Omim ID	604174
Gene Ontology	Hyperlink

Gene Summary	Ribosomes, the organelles that catalyze protein synthesis, consist of a small 40S subunit and a large 60S subunit. Together these subunits are composed of 4 RNA species and approximately 80 structurally distinct proteins. This gene encodes a ribosomal protein that is a component of the 60S subunit. The protein belongs to the L15E family of ribosomal proteins. It is located in the cytoplasm. This gene shares sequence similarity with the yeast ribosomal protein YL10 gene. Although this gene has been referred to as RPL10, its official symbol is RPL15. This gene has been shown to be overexpressed in some esophageal tumors compared to normal matched tissues. Transcript variants utilizing alternative polyA signals exist. As is typical for genes encoding ribosomal proteins, there are multiple processed pseudogenes of this gene dispersed through the genome. [provided by RefSeq]
---------------------	--

Other Designations	60S ribosomal protein L15 OTTHUMP00000016039 OTTHUMP00000039257
---------------------------	---

Pathway

- [Ribosome](#)