

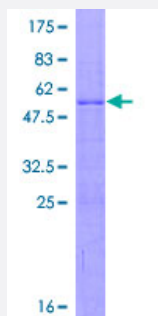
Full-Length

RPL15 (Human) Recombinant Protein (P01)

Catalog # H00006138-P01

Size 2 ug

Applications



Specification

Product Description	Human RPL15 full-length ORF (NP_002939.2, 1 a.a. - 204 a.a.) recombinant protein with GST-tag at N-terminal.
Sequence	MGAYKIQELWRKKQSDVMRFLLRVRCWQYRQLSALHRAPRPTRPDKARRLGKAKQGYVYRIR VRRGGRKRPVPGATYGKPVHHGVNQLKFARSLQSVAEERAGRHCALRVLNSYWVGEDSTYK FFEVLIDPFHKAIRNPDTQWITKPVHKHREMRLTSAGRKSRLGKGHKFHHTIGGSRRAAWRR RNTLQLHRYR
Host	Wheat Germ (in vitro)
Theoretical MW (kDa)	50.5
Preparation Method	in vitro wheat germ expression system
Purification	Glutathione Sepharose 4 Fast Flow
Quality Control Testing	12.5% SDS-PAGE Stained with Coomassie Blue.
Storage Buffer	50 mM Tris-HCl, 10 mM reduced Glutathione, pH=8.0 in the elution buffer.
Storage Instruction	Store at -80°C. Aliquot to avoid repeated freezing and thawing.
Note	Best use within three months from the date of receipt of this protein.

Applications

- Enzyme-linked Immunoabsorbent Assay
- Western Blot (Recombinant protein)
- Antibody Production
- Protein Array

Gene Info — RPL15

Entrez GeneID [6138](#)

GeneBank Accession# [NM_002948.2](#)

Protein Accession# [NP_002939.2](#)

Gene Name RPL15

Gene Alias EC45, FLJ26304, MGC88603, RPL10, RPLY10, RPYL10

Gene Description ribosomal protein L15

Omim ID [604174](#)

Gene Ontology [Hyperlink](#)

Gene Summary Ribosomes, the organelles that catalyze protein synthesis, consist of a small 40S subunit and a large 60S subunit. Together these subunits are composed of 4 RNA species and approximately 80 structurally distinct proteins. This gene encodes a ribosomal protein that is a component of the 60S subunit. The protein belongs to the L15E family of ribosomal proteins. It is located in the cytoplasm. This gene shares sequence similarity with the yeast ribosomal protein YL10 gene. Although this gene has been referred to as RPL10, its official symbol is RPL15. This gene has been shown to be overexpressed in some esophageal tumors compared to normal matched tissues. Transcript variants utilizing alternative polyA signals exist. As is typical for genes encoding ribosomal proteins, there are multiple processed pseudogenes of this gene dispersed through the genome. [provided by RefSeq]

Other Designations 60S ribosomal protein L15|OTTHUMP00000016039|OTTHUMP00000039257

Pathway

- [Ribosome](#)