

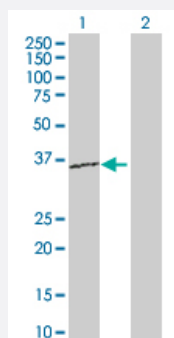
MaxPab®

## RPL15 purified MaxPab rabbit polyclonal antibody (D01P)

Catalog # H00006138-D01P

Size 100 ug

### Applications



#### Western Blot (Transfected lysate)

Western Blot analysis of RPL15 expression in transfected 293T cell line ([H00006138-T02](#)) by RPL15 MaxPab polyclonal antibody.

Lane 1: RPL15 transfected lysate(24.10 KDa).

Lane 2: Non-transfected lysate.

### Specification

Product Description	Rabbit polyclonal antibody raised against a full-length human RPL15 protein.
Immunogen	RPL15 (NP_002939.2, 1 a.a. ~ 204 a.a) full-length human protein.
Sequence	MGAYKIQELWRKKQSDVMRFLLRVRCWQYRQLSALHRAPRPTRPDKARRLGYKAKQGYVIYRIR VRRGGRKRPVPGATYGPVHHGVNQLKFARSLQSVAEERAGRHCALRVLNSYWVGEDSTYK FFEVLIDPFHKAIRNPDTQWITKPVHKKHREMRLTSAGRKSRGLGKGHKFHHTIGGSRRAAWRR RNTLQLHRYR
Host	Rabbit
Reactivity	Human
Quality Control Testing	Antibody reactive against mammalian transfected lysate.
Storage Buffer	In 1x PBS, pH 7.4
Storage Instruction	Store at -20°C or lower. Aliquot to avoid repeated freezing and thawing.

## Applications

- Western Blot (Transfected lysate)

Western Blot analysis of RPL15 expression in transfected 293T cell line ([H00006138-T02](#)) by RPL15 MaxPab polyclonal antibody.

Lane 1: RPL15 transfected lysate(24.10 KDa).

Lane 2: Non-transfected lysate.

[Protocol Download](#)

## Gene Info — RPL15

Entrez GeneID [6138](#)

GeneBank Accession# [NM\\_002948.2](#)

Protein Accession# [NP\\_002939.2](#)

Gene Name RPL15

Gene Alias EC45, FLJ26304, MGC88603, RPL10, RPLY10, RPYL10

Gene Description ribosomal protein L15

Omim ID [604174](#)

Gene Ontology [Hyperlink](#)

**Gene Summary** Ribosomes, the organelles that catalyze protein synthesis, consist of a small 40S subunit and a large 60S subunit. Together these subunits are composed of 4 RNA species and approximately 80 structurally distinct proteins. This gene encodes a ribosomal protein that is a component of the 60 S subunit. The protein belongs to the L15E family of ribosomal proteins. It is located in the cytoplasm. This gene shares sequence similarity with the yeast ribosomal protein YL10 gene. Although this gene has been referred to as RPL10, its official symbol is RPL15. This gene has been shown to be overexpressed in some esophageal tumors compared to normal matched tissues. Transcript variants utilizing alternative polyA signals exist. As is typical for genes encoding ribosomal proteins, there are multiple processed pseudogenes of this gene dispersed through the genome. [provided by RefSeq]

**Other Designations** 60S ribosomal protein L15|OTTHUMP00000016039|OTTHUMP00000039257

## Pathway

- [Ribosome](#)