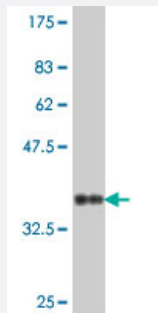


RPL15 polyclonal antibody (A01)

Catalog # H00006138-A01

Size 50 uL

Applications



Western Blot detection against Immunogen (37 KDa) .

Specification

Product Description	Mouse polyclonal antibody raised against a partial recombinant RPL15.
Immunogen	RPL15 (NP_002939, 105 a.a. ~ 203 a.a) partial recombinant protein with GST tag.
Sequence	RAGRHCALRVLNSYWVGEDSTYKFFEVLIDPFHKAIRRNPDQTQWITKPVHKKHREMRLTSAGRK SRGLGKGHKFHHTIGGSRRAAWRRRNTLQLHRY
Host	Mouse
Reactivity	Human
Quality Control Testing	Antibody Reactive Against Recombinant Protein. Western Blot detection against Immunogen (37 KDa) .
Storage Buffer	50 % glycerol
Storage Instruction	Store at -20°C or lower. Aliquot to avoid repeated freezing and thawing.

Applications

- Western Blot (Recombinant protein)

[Protocol Download](#)

- ELISA

Gene Info — RPL15

Entrez GeneID [6138](#)

GeneBank Accession# [NM_002948](#)

Protein Accession# [NP_002939](#)

Gene Name RPL15

Gene Alias EC45, FLJ26304, MGC88603, RPL10, RPLY10, RPYL10

Gene Description ribosomal protein L15

Omim ID [604174](#)

Gene Ontology [Hyperlink](#)

Gene Summary Ribosomes, the organelles that catalyze protein synthesis, consist of a small 40S subunit and a large 60S subunit. Together these subunits are composed of 4 RNA species and approximately 80 structurally distinct proteins. This gene encodes a ribosomal protein that is a component of the 60 S subunit. The protein belongs to the L15E family of ribosomal proteins. It is located in the cytoplasm. This gene shares sequence similarity with the yeast ribosomal protein YL10 gene. Although this gene has been referred to as RPL10, its official symbol is RPL15. This gene has been shown to be overexpressed in some esophageal tumors compared to normal matched tissues. Transcript variants utilizing alternative polyA signals exist. As is typical for genes encoding ribosomal proteins, there are multiple processed pseudogenes of this gene dispersed through the genome. [provided by RefSeq]

Other Designations 60S ribosomal protein L15|OTTHUMP00000016039|OTTHUMP00000039257

Publication Reference

- [A Novel Interaction Between Interferon-Inducible Protein p56 and Ribosomal Protein L15 in Gastric Cancer Cells.](#)

Hsu YA, Lin HJ, Sheu JJ, Shieh FK, Chen SY, Lai CH, Tsai FJ, Wan L, Chen BH.

DNA and Cell Biology 2011 Sep; 30(9):671.

Application: WB-Tr, Human, AGS, MKN45 cells

Pathway

- [Ribosome](#)