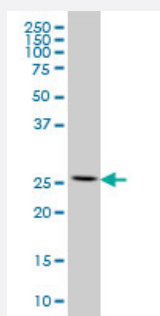


# RPL13 monoclonal antibody (M01), clone 3F6

Catalog # H00006137-M01

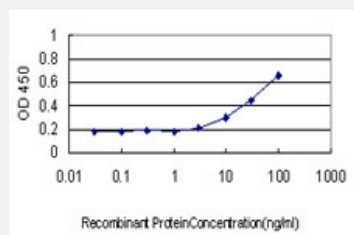
Size 100 ug

## Applications



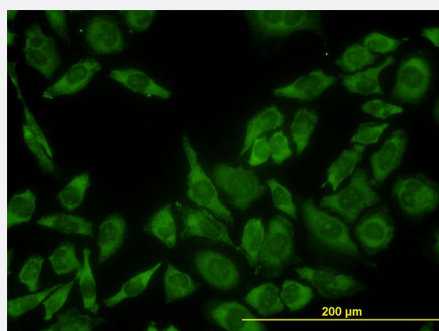
### Western Blot (Cell lysate)

RPL13 monoclonal antibody (M01), clone 3F6 Western Blot analysis of RPL13 expression in HeLa ( Cat # L013V1 ).



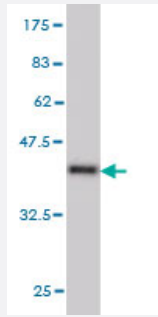
### Sandwich ELISA (Recombinant protein)

Detection limit for recombinant GST tagged RPL13 is approximately 3ng/ml as a capture antibody.



### Immunofluorescence

Immunofluorescence of monoclonal antibody to RPL13 on HeLa cell. [antibody concentration 10 ug/ml]



Western Blot detection against Immunogen (36.74 KDa) .

## Specification

<b>Product Description</b>	Mouse monoclonal antibody raised against a partial recombinant RPL13.
<b>Immunogen</b>	RPL13 (NP_000968, 112 a.a. ~ 211 a.a) partial recombinant protein with GST tag. MW of the GST tag alone is 26 KDa.
<b>Sequence</b>	ANVQRLKEYRSKLILFPRKPSAPKKGDSSAEELKLATQLTGPVMPVRNVYKKEKARVITEEEKNF KAFASLRMARANARLFGIRAKRAKEAAEQDVEKKK
<b>Host</b>	Mouse
<b>Reactivity</b>	Human
<b>Interspecies Antigen Sequence</b>	Rat (98)
<b>Isotype</b>	IgG2a Kappa
<b>Quality Control Testing</b>	Antibody Reactive Against Recombinant Protein. Western Blot detection against Immunogen (36.74 KDa) .
<b>Storage Buffer</b>	In 1x PBS, pH 7.4
<b>Storage Instruction</b>	Store at -20°C or lower. Aliquot to avoid repeated freezing and thawing.

## Applications

- Western Blot (Cell lysate)

RPL13 monoclonal antibody (M01), clone 3F6 Western Blot analysis of RPL13 expression in HeLa ( Cat # L013V1 ).

[Protocol Download](#)

- Western Blot (Recombinant protein)

[Protocol Download](#)

- Sandwich ELISA (Recombinant protein)

Detection limit for recombinant GST tagged RPL13 is approximately 3ng/ml as a capture antibody.

[Protocol Download](#)

- ELISA

- Immunofluorescence

Immunofluorescence of monoclonal antibody to RPL13 on HeLa cell. [antibody concentration 10 ug/ml]

## Gene Info — RPL13

Entrez GeneID [6137](#)

GeneBank Accession# [NM\\_000977](#)

Protein Accession# [NP\\_000968](#)

Gene Name RPL13

Gene Alias BBC1, D16S444E, FLJ27453, FLJ27454, MGC117342, MGC71373

Gene Description ribosomal protein L13

Omim ID [113703](#)

Gene Ontology [Hyperlink](#)

**Gene Summary** Ribosomes, the organelles that catalyze protein synthesis, consist of a small 40S subunit and a large 60S subunit. Together these subunits are composed of 4 RNA species and approximately 80 structurally distinct proteins. This gene encodes a ribosomal protein that is a component of the 60 S subunit. The protein belongs to the L13E family of ribosomal proteins. It is located in the cytoplasm. This gene is expressed at significantly higher levels in benign breast lesions than in breast carcinomas. Transcript variants derived from alternative splicing and/or alternative polyadenylation exist; these variants encode the same protein. As is typical for genes encoding ribosomal proteins, there are multiple processed pseudogenes of this gene dispersed through the genome. [provided by RefSeq]

**Other Designations** 60S ribosomal protein L13|OK/SW-cl.46|OTTHUMP00000165256|breast basic conserved protein 1

## Pathway

- [Ribosome](#)