

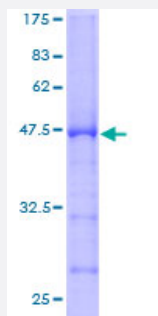
Full-Length

RPL9 (Human) Recombinant Protein (P01)

Catalog # H00006133-P01

Size 25 ug, 10 ug

Applications



Specification

Product Description	Human RPL9 full-length ORF (AAH66318, 1 a.a. - 192 a.a.) recombinant protein with GST-tag at N-terminal.
Sequence	MKTILSNQTVDIPENVDTILKGRTVIVKGPRGTLRRDFNHINVELSLLGKKKKRLRVDKWWGNRKEL ATVRTICSHVQNMKGVTLGFRYKMRSVYAHFPINVVIQENGSLVEIRNFLGEKYIRRVMRPGVAC SVSQAQKDELILEGNDIELVSNSAALIQQATTVKNKDIRKFLDGYVSEKGTVQQADE
Host	Wheat Germ (in vitro)
Theoretical MW (kDa)	46.86
Interspecies Antigen Sequence	Mouse (99); Rat (99)
Preparation Method	in vitro wheat germ expression system
Purification	Glutathione Sepharose 4 Fast Flow
Quality Control Testing	12.5% SDS-PAGE Stained with Coomassie Blue.
Storage Buffer	50 mM Tris-HCl, 10 mM reduced Glutathione, pH=8.0 in the elution buffer.
Storage Instruction	Store at -80°C. Aliquot to avoid repeated freezing and thawing.

Note

Best use within three months from the date of receipt of this protein.

Applications

- Enzyme-linked Immunoabsorbent Assay
- Western Blot (Recombinant protein)
- Antibody Production
- Protein Array

Gene Info — RPL9

Entrez GeneID [6133](#)

GeneBank Accession# [BC066318](#)

Protein Accession# [AAH66318](#)

Gene Name RPL9

Gene Alias DKFZp313J1510, FLJ27456, MGC15545, NPC-A-16

Gene Description ribosomal protein L9

Omim ID [603686](#)

Gene Ontology [Hyperlink](#)

Gene Summary Ribosomes, the organelles that catalyze protein synthesis, consist of a small 40S subunit and a large 60S subunit. Together these subunits are composed of 4 RNA species and approximately 80 structurally distinct proteins. This gene encodes a ribosomal protein that is a component of the 60S subunit. The protein belongs to the L6P family of ribosomal proteins. It is located in the cytoplasm. As is typical for genes encoding ribosomal proteins, there are multiple processed pseudogenes of this gene dispersed through the genome. Two alternatively spliced transcript variants encoding the same protein have been found for this gene. [provided by RefSeq]

Other Designations 60S ribosomal protein L9|OTTHUMP00000125205

Pathway

- [Ribosome](#)