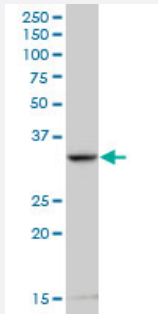


RPL8 polyclonal antibody (A01)

Catalog # H00006132-A01

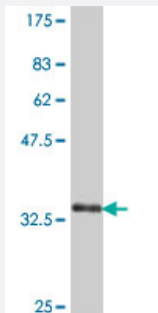
Size 50 uL

Applications



Western Blot (Cell lysate)

RPL8 polyclonal antibody (A01), Lot # 051220JC01 Western Blot analysis of RPL8 expression in HepG2 (Cat # L019V1).



Western Blot detection against Immunogen (38.21 KDa) .

Specification

Product Description	Mouse polyclonal antibody raised against a partial recombinant RPL8.
Immunogen	RPL8 (NP_000964, 148 a.a. ~ 257 a.a) partial recombinant protein with GST tag.
Sequence	VKLPSGSKKVISSANRAVVGVVAGGGRIDKPKLAGRAYHKYKAKRNCWPRVRGVAMNPVEHPF GGGNHQHIGKPSTIRRDAPAGRKVGLIAARRTGRLRGTKTVQEKEN
Host	Mouse
Reactivity	Human
Quality Control Testing	Antibody Reactive Against Recombinant Protein. Western Blot detection against Immunogen (38.21 KDa) .

Storage Buffer

50 % glycerol

Storage Instruction

Store at -20°C or lower. Aliquot to avoid repeated freezing and thawing.

Applications

- Western Blot (Cell lysate)

RPL8 polyclonal antibody (A01), Lot # 051220JC01 Western Blot analysis of RPL8 expression in HepG2 (Cat # L019V1).

[Protocol Download](#)

- Western Blot (Recombinant protein)

[Protocol Download](#)

- ELISA

Gene Info — RPL8

Entrez GeneID[6132](#)**GeneBank Accession#**[NM_000973](#)**Protein Accession#**[NP_000964](#)**Gene Name**

RPL8

Gene Alias

-

Gene Description

ribosomal protein L8

Omim ID[604177](#)**Gene Ontology**[Hyperlink](#)**Gene Summary**

Ribosomes, the organelles that catalyze protein synthesis, consist of a small 40S subunit and a large 60S subunit. Together these subunits are composed of 4 RNA species and approximately 80 structurally distinct proteins. This gene encodes a ribosomal protein that is a component of the 60 S subunit. The protein belongs to the L2P family of ribosomal proteins. It is located in the cytoplasm. In rat, the protein associates with the 5.8S rRNA, very likely participates in the binding of amino acyl-tRNA, and is a constituent of the elongation factor 2-binding site at the ribosomal subunit interface. Alternatively spliced transcript variants encoding the same protein exist. As is typical for genes encoding ribosomal proteins, there are multiple processed pseudogenes of this gene dispersed through the genome. [provided by RefSeq]

Other Designations

60S ribosomal protein L8

Pathway

- [Ribosome](#)