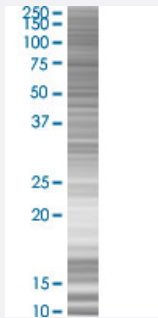


RPL6 293T Cell Transient Overexpression Lysate(Denatured)

Catalog # H00006128-T02

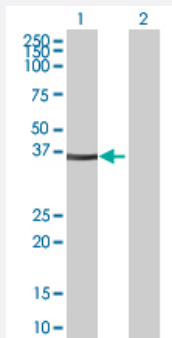
Size 100 uL

Applications



SDS-PAGE Gel

RPL6 transfected lysate.



Western Blot

Lane 1: RPL6 transfected lysate (31.79 KDa)

Lane 2: Non-transfected lysate.

Specification

Transfected Cell Line 293T

Plasmid pCMV-RPL6 full-length

Host Human

Theoretical MW (kDa) 31.79

Quality Control Testing Transient overexpression cell lysate was tested with Anti-RPL6 antibody ([H00006128-B03](#)) by Western Blots.
SDS-PAGE Gel
RPL6 transfected lysate.
Western Blot
Lane 1: RPL6 transfected lysate (31.79 KDa)
Lane 2: Non-transfected lysate.

Storage Buffer

1X Sample Buffer (50 mM Tris-HCl, 2% SDS, 10% glycerol, 300 mM 2-mercaptoethanol, 0.01% Bromophenol blue)

Storage Instruction

Store at -80°C. Aliquot to avoid repeated freezing and thawing.

Applications

- Western Blot

Gene Info — RPL6

Entrez GeneID[6128](#)**GeneBank Accession#**[NM_000970.3](#)**Protein Accession#**[P0](#)**Gene Name**

RPL6

Gene Alias

SHUJUN-2, TAXREB107, TXREB1

Gene Description

ribosomal protein L6

Omim ID[603703](#)**Gene Ontology**[Hyperlink](#)**Gene Summary**

Ribosomes, the organelles that catalyze protein synthesis, consist of a small 40S subunit and a large 60S subunit. Together these subunits are composed of 4 RNA species and approximately 80 structurally distinct proteins. This gene encodes a ribosomal protein that is a component of the 60S subunit. The protein belongs to the L6E family of ribosomal proteins. It is located in the cytoplasm. The protein can bind specifically to domain C of the tax-responsive enhancer element of human T-cell leukemia virus type 1, and it has been suggested that the protein may participate in tax-mediated transactivation of transcription. As is typical for genes encoding ribosomal proteins, there are multiple processed pseudogenes of this gene dispersed through the genome. Two alternatively spliced transcript variants encoding the same protein have been found for this gene. [provided by RefSeq]

Other Designations

60S ribosomal protein L6|DNA-binding protein TAXREB107|neoplasm-related protein C140|tax-responsive enhancer element-binding protein 107

Pathway

- [Ribosome](#)