

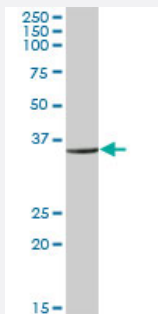
MaxPab®

RPL6 purified MaxPab mouse polyclonal antibody (B03P)

Catalog # H00006128-B03P

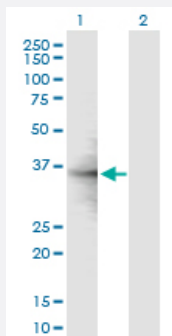
Size 50 ug

Applications



Western Blot (Tissue lysate)

RPL6 MaxPab polyclonal antibody. Western Blot analysis of RPL6 expression in human placenta.



Western Blot (Transfected lysate)

Western Blot analysis of RPL6 expression in transfected 293T cell line ([H00006128-T02](#)) by RPL6 MaxPab polyclonal antibody.

Lane 1: RPL6 transfected lysate(31.68 KDa).

Lane 2: Non-transfected lysate.

Specification

Product Description

Mouse polyclonal antibody raised against a full-length human RPL6 protein.

Immunogen

RPL6 (NP_000961.2, 1 a.a. ~ 288 a.a) full-length human protein.

Sequence

MAGEKVEKPDITKEKKPEAKKVDAGGKVKKGNLKAKKPKKGKPHCSRNPVLVRGIGRYSRSAMY
SRKAMYKRKYSAASKVEKKKKKEKVLATVTKPVGGDKNGGTRVVKLKMPRYPTEDVPRKLLS
HGKKPFSQHVRKLRSITPGTILILTGRHRGKRNVFLKQLASGLLLVTGPLVLNRVPLRRTHQKFVI
ATSTKIDISNVKIPKHLTDAYFKKKKLKPRHQEGEIFDTEKEKYEITEQRKIDQKAVDSQILPKIKAIP
QLQGYLRVSFALTNGYPHKLVF

Host

Mouse

Reactivity	Human
Quality Control Testing	Antibody reactive against mammalian transfected lysate.
Storage Buffer	In 1x PBS, pH 7.4
Storage Instruction	Store at -20°C or lower. Aliquot to avoid repeated freezing and thawing.

Applications

- Western Blot (Tissue lysate)

RPL6 MaxPab polyclonal antibody. Western Blot analysis of RPL6 expression in human placenta.

[Protocol Download](#)

- Western Blot (Transfected lysate)

Western Blot analysis of RPL6 expression in transfected 293T cell line ([H00006128-T02](#)) by RPL6 MaxPab polyclonal antibody.

Lane 1: RPL6 transfected lysate(31.68 KDa).

Lane 2: Non-transfected lysate.

[Protocol Download](#)

Gene Info — RPL6

Entrez GeneID	6128
GeneBank Accession#	NM_000970.3
Protein Accession#	NP_000961.2
Gene Name	RPL6
Gene Alias	SHUJUN-2, TAXREB107, TXREB1
Gene Description	ribosomal protein L6
Omim ID	603703
Gene Ontology	Hyperlink

Gene Summary

Ribosomes, the organelles that catalyze protein synthesis, consist of a small 40S subunit and a large 60S subunit. Together these subunits are composed of 4 RNA species and approximately 80 structurally distinct proteins. This gene encodes a ribosomal protein that is a component of the 60S subunit. The protein belongs to the L6E family of ribosomal proteins. It is located in the cytoplasm. The protein can bind specifically to domain C of the tax-responsive enhancer element of human T-cell leukemia virus type 1, and it has been suggested that the protein may participate in tax-mediated transactivation of transcription. As is typical for genes encoding ribosomal proteins, there are multiple processed pseudogenes of this gene dispersed through the genome. Two alternatively spliced transcript variants encoding the same protein have been found for this gene. [provided by RefSeq]

Other Designations

60S ribosomal protein L6|DNA-binding protein TAXREB107|neoplasm-related protein C140|tax-responsive enhancer element-binding protein 107

Pathway

- [Ribosome](#)