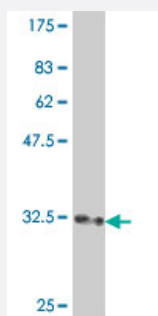


RPL3L polyclonal antibody (A01)

Catalog # H00006123-A01

Size 50 uL

Applications



Western Blot detection against Immunogen (35.02 KDa) .

Specification

Product Description	Mouse polyclonal antibody raised against a partial recombinant RPL3L.
Immunogen	RPL3L (NP_005052, 280 a.a. ~ 360 a.a) partial recombinant protein with GST tag.
Sequence	LNKKIFRIGRGPHMEDGKLVKNNASTSYDVTAKSITPLGGFPHYGEVNNDFVMLKGCIAGTKKRVIT LRKSLLVHHSRQAV
Host	Mouse
Reactivity	Human
Interspecies Antigen Sequence	Mouse (90); Rat (91)
Quality Control Testing	Antibody Reactive Against Recombinant Protein. Western Blot detection against Immunogen (35.02 KDa) .
Storage Buffer	50 % glycerol
Storage Instruction	Store at -20°C or lower. Aliquot to avoid repeated freezing and thawing.

Applications

- Western Blot (Recombinant protein)

[Protocol Download](#)

- ELISA

Gene Info — RPL3L

Entrez GeneID [6123](#)

GeneBank Accession# [NM_005061](#)

Protein Accession# [NP_005052](#)

Gene Name RPL3L

Gene Alias -

Gene Description ribosomal protein L3-like

Gene Ontology [Hyperlink](#)

Gene Summary This gene encodes a protein that shares sequence similarity with ribosomal protein L3. The protein belongs to the L3P family of ribosomal proteins. Unlike the ubiquitous expression of ribosomal protein genes, this gene has a tissue-specific pattern of expression, with the highest levels of expression in skeletal muscle and heart. It is not currently known whether the encoded protein is a functional ribosomal protein or whether it has evolved a function that is independent of the ribosome. [provided by RefSeq]

Other Designations 60S ribosomal protein L3-like

Pathway

- [Ribosome](#)