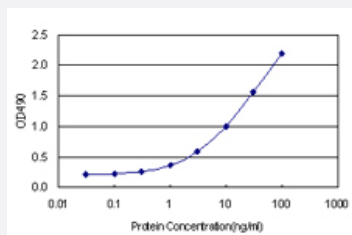


RP2 (Human) Matched Antibody Pair

Catalog # H00006102-AP22

Size 1 Set

Applications



Sandwich ELISA detection sensitivity ranging from 0.1 ng/ml to 100 ng/ml.

Specification

Product Description	This antibody pair set comes with a matched antibody pair to detect and quantify the protein level of human RP2.
Reactivity	Human
Interspecies Antigen Sequence	Mouse (88%); Rat (88%)
Quality Control Testing	Standard curve using recombinant protein (H00006102-P01) as an analyte. Sandwich ELISA detection sensitivity ranging from 0.1 ng/ml to 100 ng/ml.
Supplied Product	Antibody pair set content: 1. Capture antibody: rabbit MaxPab® affinity purified polyclonal anti-RP2 (100 ug) 2. Detection antibody: mouse purified polyclonal anti-RP2 (20 ug) *Reagents are sufficient for at least 1-2 x 96 well plates using recommended protocols.
Storage Instruction	Store reagents of the antibody pair set at -20°C or lower. Please aliquot to avoid repeated freeze thaw cycle. Reagents should be returned to -20°C storage immediately after use.

Applications

- ELISA Pair (Recombinant protein)

[Protocol Download](#)

Gene Info — RP2

Entrez GeneID [6102](#)

Gene Name RP2

Gene Alias DELXp11.3, KIAA0215, TBCCD2

Gene Description retinitis pigmentosa 2 (X-linked recessive)

Omim ID [300578](#) [312600](#)

Gene Ontology [Hyperlink](#)

Gene Summary The RP2 locus has been implicated as one cause of X-linked retinitis pigmentosa. The predicted gene product shows homology with human cofactor C, a protein involved in the ultimate step of beta-tubulin folding. Progressive retinal degeneration may therefore be due to the accumulation of incorrectly-folded photoreceptor or neuron-specific tubulin isoforms followed by progressive cell death [provided by RefSeq]

Other Designations OTTHUMP00000023189|XRP2 protein

Disease

- [Genetic Diseases](#)
- [Retinal Diseases](#)
- [Retinitis Pigmentosa](#)