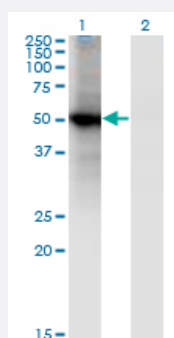


RORB monoclonal antibody (M01), clone 4B4

Catalog # H00006096-M01

Size 100 ug

Applications

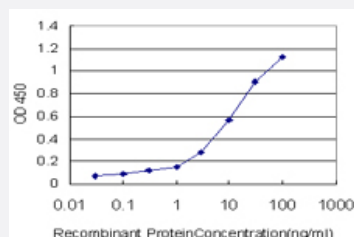


Western Blot (Transfected lysate)

Western Blot analysis of RORB expression in transfected 293T cell line by RORB monoclonal antibody (M01), clone 4B4.

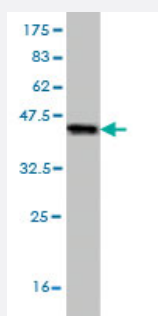
Lane 1: RORB transfected lysate (Predicted MW: 52.1 KDa).

Lane 2: Non-transfected lysate.



Sandwich ELISA (Recombinant protein)

Detection limit for recombinant GST tagged RORB is approximately 0.3ng/ml as a capture antibody.



Western Blot detection against Immunogen (35.53 KDa) .

Specification

Product Description

Mouse monoclonal antibody raised against a partial recombinant RORB.

Immunogen	RORB (NP_008845, 136 a.a. ~ 224 a.a) partial recombinant protein with GST tag. MW of the GST tag alone is 26 KDa.
Sequence	ETSGTYANGHVIDLPKSEGYNVDSGQPSPDQSGGLDMTGKQIKQEPIDLTSPVNLFTYSSFNNGQLAPGITMTEIDRIAQNIKSHL
Host	Mouse
Reactivity	Human
Isotype	IgG1 Kappa
Quality Control Testing	Antibody Reactive Against Recombinant Protein. Western Blot detection against Immunogen (35.53 KDa) .
Storage Buffer	In 1x PBS, pH 7.4
Storage Instruction	Store at -20°C or lower. Aliquot to avoid repeated freezing and thawing.

Applications

- Western Blot (Transfected lysate)

Western Blot analysis of RORB expression in transfected 293T cell line by RORB monoclonal antibody (M01), clone 4B4.

Lane 1: RORB transfected lysate (Predicted MW: 52.1 KDa).

Lane 2: Non-transfected lysate.

[Protocol Download](#)

- Western Blot (Recombinant protein)

[Protocol Download](#)

- Sandwich ELISA (Recombinant protein)

Detection limit for recombinant GST tagged RORB is approximately 0.3ng/ml as a capture antibody.

[Protocol Download](#)

- ELISA

Gene Info — RORB

Entrez GeneID [6096](#)

GeneBank Accession# [NM_006914](#)

Protein Accession#	NP_008845
Gene Name	RORB
Gene Alias	NR1F2, ROR-BETA, RZR-BETA, RZRB, bA133M9.1
Gene Description	RAR-related orphan receptor B
Omim ID	601972
Gene Ontology	Hyperlink
Gene Summary	<p>The protein encoded by this gene is a member of the NR1 subfamily of nuclear hormone receptors. It is a DNA-binding protein that can bind as a monomer or as a homodimer to hormone response elements upstream of several genes to enhance the expression of those genes. The specific functions of this protein are not known, but it has been shown to interact with NM23-2, a nucleoside diphosphate kinase involved in organogenesis and differentiation. [provided by RefSeq]</p>
Other Designations	OTTHUMP00000021486 RAR-related orphan receptor beta nuclear receptor RZR-beta retinoic acid-binding receptor beta retinoid-related orphan receptor beta

Disease

- [Bipolar Disorder](#)
- [Disease Models](#)
- [Genetic Predisposition to Disease](#)
- [Psychiatric Status Rating Scales](#)
- [Psychotic Disorders](#)
- [Schizophrenia](#)
- [Tobacco Use Disorder](#)