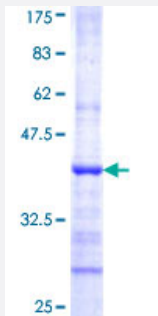


ABCE1 (Human) Recombinant Protein (Q01)

Catalog # H00006059-Q01

Size 25 ug, 10 ug

Applications



Specification

Product Description	Human ABCE1 partial ORF (NP_002931, 500 a.a. - 597 a.a.) recombinant protein with GST-tag at N-terminal.
Sequence	AARVVKRFILHAKKTAFVVEHDFIMATYLADRVVFDGVPSKNTVANSQTLTAGMKNKFLSQLEITFRRDPNNYRPRINKLNSIKDVEQKKSGNYFFL
Host	Wheat Germ (in vitro)
Theoretical MW (kDa)	36.52
Interspecies Antigen Sequence	Mouse (100); Rat (100)
Preparation Method	in vitro wheat germ expression system
Purification	Glutathione Sepharose 4 Fast Flow
Quality Control Testing	12.5% SDS-PAGE Stained with Coomassie Blue.
Storage Buffer	50 mM Tris-HCl, 10 mM reduced Glutathione, pH=8.0 in the elution buffer.
Storage Instruction	Store at -80°C. Aliquot to avoid repeated freezing and thawing.
Note	Best use within three months from the date of receipt of this protein.

Applications

- Enzyme-linked Immunoabsorbent Assay
- Western Blot (Recombinant protein)
- Antibody Production
- Protein Array

Gene Info — ABCE1

Entrez GeneID [6059](#)

GeneBank Accession# [NM_002940](#)

Protein Accession# [NP_002931](#)

Gene Name ABCE1

Gene Alias ABC38, OABP, RLI, RNASEL1, RNASELI, RNS4I

Gene Description ATP-binding cassette, sub-family E (OABP), member 1

Omim ID [601213](#)

Gene Ontology [Hyperlink](#)

Gene Summary

The protein encoded by this gene is a member of the superfamily of ATP-binding cassette (ABC) transporters. ABC proteins transport various molecules across extra- and intra-cellular membranes. ABC genes are divided into seven distinct subfamilies (ABC1, MDR/TAP, MRP, ALD, OABP, GCN20, White). This protein is a member of the OABP subfamily. Alternatively referred to as the RNase L inhibitor, this protein functions to block the activity of ribonuclease L. Activation of ribonuclease L leads to inhibition of protein synthesis in the 2-5A/RNase L system, the central pathway for viral interferon action. Two transcript variants encoding the same protein have been found for this gene. [provided by RefSeq]

Other Designations

ATP-binding cassette, sub-family E, member 1|RNase L inhibitor|ribonuclease L (2',5'-oligoadenylate synthetase-dependent) inhibitor

Disease

- [Genetic Predisposition to Disease](#)

- [Prostate cancer](#)
- [Prostatic Neoplasms](#)