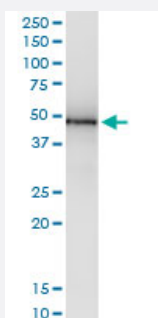


RNH1 (Human) IP-WB Antibody Pair

Catalog # H00006050-PW1

Size 1 Set

Applications



Immunoprecipitation of RNH1 transfected lysate using rabbit polyclonal anti-RNH1 and Protein A Magnetic Bead ([U0007](#)), and immunoblotted with mouse purified polyclonal anti-RNH1.

Specification

Product Description	This IP-WB antibody pair set comes with one antibody for immunoprecipitation and another to detect the precipitated protein in western blot.
Reactivity	Human
Interspecies Antigen Sequence	Mouse (73%); Rat (75%)
Quality Control Testing	Immunoprecipitation-Western Blot (IP-WB) Immunoprecipitation of RNH1 transfected lysate using rabbit polyclonal anti-RNH1 and Protein A Magnetic Bead (U0007), and immunoblotted with mouse purified polyclonal anti-RNH1.
Supplied Product	Antibody pair set content: 1. Antibody pair for IP: rabbit polyclonal anti-RNH1 (300 ul) 2. Antibody pair for WB: mouse purified polyclonal anti-RNH1 (50 ug)
Storage Instruction	Store reagents of the antibody pair set at -20°C or lower. Please aliquot to avoid repeated freeze thaw cycle. Reagents should be returned to -20°C storage immediately after use.

Applications

- Immunoprecipitation-Western Blot

[Protocol Download](#)

Gene Info — RNH1

Entrez GeneID	6050
Gene Name	RNH1
Gene Alias	MGC18200, MGC4569, MGC54054, RAI, RNH
Gene Description	ribonuclease/angiogenin inhibitor 1
Omim ID	173320
Gene Ontology	Hyperlink
Other Designations	OTTHUMP00000147628 Placental ribonuclease inhibitor ribonuclease/angiogenin inhibitor

Disease

- [Carcinoma](#)
- [Skin Neoplasms](#)