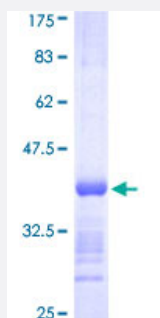


# BRD2 (Human) Recombinant Protein (Q01)

Catalog # H00006046-Q01

Size 25 ug, 10 ug

## Applications



## Specification

<b>Product Description</b>	Human BRD2 partial ORF ( NP_005095, 167 a.a. - 256 a.a.) recombinant protein with GST-tag at N-terminal.
<b>Sequence</b>	QTLEKIFLQKVASMPQEEQELVVTIPKNSHKKGAKLAALQGSV TSAHQVPAVSSVSHTALYT PPP EIP TTVLNIPHP SVISSPLLKSLHS
<b>Host</b>	Wheat Germ (in vitro)
<b>Theoretical MW (kDa)</b>	35.53
<b>Preparation Method</b>	<a href="#">in vitro wheat germ expression system</a>
<b>Purification</b>	Glutathione Sepharose 4 Fast Flow
<b>Quality Control Testing</b>	12.5% SDS-PAGE Stained with Coomassie Blue.
<b>Storage Buffer</b>	50 mM Tris-HCl, 10 mM reduced Glutathione, pH=8.0 in the elution buffer.
<b>Storage Instruction</b>	Store at -80°C. Aliquot to avoid repeated freezing and thawing.
<b>Note</b>	Best use within three months from the date of receipt of this protein.

## Applications

- Enzyme-linked Immunoabsorbent Assay
- Western Blot (Recombinant protein)
- Antibody Production
- Protein Array

## Gene Info — BRD2

Entrez GeneID	<a href="#">6046</a>
GeneBank Accession#	<a href="#">NM_005104</a>
Protein Accession#	<a href="#">NP_005095</a>
Gene Name	BRD2
Gene Alias	D6S113E, DKFZp686N0336, FLJ31942, FSH, FSRG1, KIAA9001, NAT, RING3, RNF3
Gene Description	bromodomain containing 2
Omim ID	<a href="#">601540</a>
Gene Ontology	<a href="#">Hyperlink</a>
Gene Summary	This gene encodes a transcriptional regulator that belongs to the BET (bromodomains and extra terminal domain) family of proteins. This protein associates with transcription complexes and with acetylated chromatin during mitosis, and it selectively binds to the acetylated lysine-12 residue of histone H4 via its two bromodomains. The gene maps to the major histocompatibility complex (MHC) class II region on chromosome 6p21.3, but sequence comparison suggests that the protein is not involved in the immune response. This gene has been implicated in juvenile myoclonic epilepsy, a common form of epilepsy that becomes apparent in adolescence. Multiple alternatively spliced variants have been described for this gene, but the full-length nature of some of these variants has not been determined. [provided by RefSeq]
Other Designations	OTTHUMP00000029350 bromodomain-containing 2 female sterile homeotic-related gene 1

## Disease

- [Abortion](#)
- [Alzheimer disease](#)

- [Cerebral Amyloid Angiopathy](#)
- [Epilepsy](#)
- [Genetic Predisposition to Disease](#)
- [Lupus Erythematosus](#)
- [Myoclonic Epilepsy](#)
- [Neuroblastoma](#)
- [Oligospermia](#)
- [Photosensitivity Disorders](#)