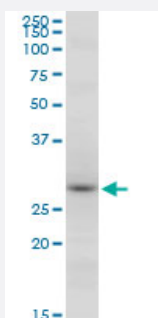


# RNF2 monoclonal antibody (M14), clone 2B4

Catalog # H00006045-M14

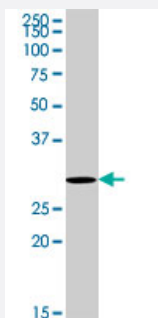
Size 100 ug

## Applications



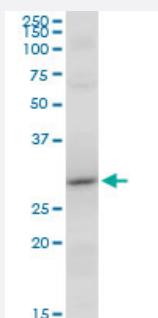
### Western Blot (Cell lysate)

RNF2 monoclonal antibody (M14), clone 2B4. Western Blot analysis of RNF2 expression in Raw 264.7 (Cat # L024V1 ).



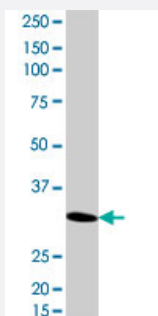
### Western Blot (Cell lysate)

RNF2 monoclonal antibody (M14), clone 2B4. Western Blot analysis of RNF2 expression in HepG2 ( Cat # L019V1 ).



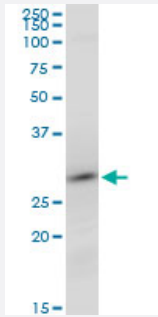
### Western Blot (Cell lysate)

RNF2 monoclonal antibody (M14), clone 2B4. Western Blot analysis of RNF2 expression in NIH/3T3 (Cat # L018V1 ).



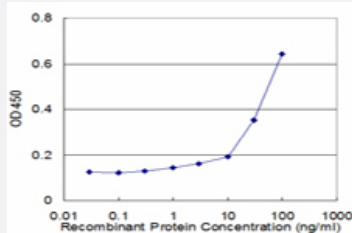
### Western Blot (Cell lysate)

RNF2 monoclonal antibody (M14), clone 2B4. Western Blot analysis of RNF2 expression in A-549 ( Cat # L025V1 ).



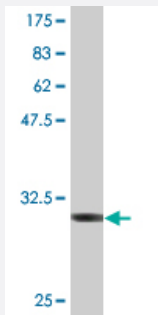
### Western Blot (Cell lysate)

RNF2 monoclonal antibody (M14), clone 2B4. Western Blot analysis of RNF2 expression in PC-12 (Cat # L012V1).



### Sandwich ELISA (Recombinant protein)

Detection limit for recombinant GST tagged RNF2 is approximately 3ng/ml as a capture antibody.



Western Blot detection against Immunogen (32.34 KDa).

## Specification

<b>Product Description</b>	Mouse monoclonal antibody raised against a full-length recombinant RNF2.
<b>Immunogen</b>	RNF2 (NP_009143, 164 a.a. ~ 223 a.a) full-length recombinant protein with GST tag. MW of the GST tag alone is 26 KDa.
<b>Sequence</b>	IENGSGAEDNGDSSHCSNASTHSNQEAGPSNKRKTSDDSGLELDNNNAAMAIDPVMGDG
<b>Host</b>	Mouse
<b>Reactivity</b>	Human, Mouse, Rat
<b>Interspecies Antigen Sequence</b>	Mouse (98); Rat (98)
<b>Isotype</b>	IgG2a Kappa

**Quality Control Testing**

Antibody Reactive Against Recombinant Protein.  
Western Blot detection against Immunogen (32.34 KDa) .

**Storage Buffer**

In 1x PBS, pH 7.4

**Storage Instruction**

Store at -20°C or lower. Aliquot to avoid repeated freezing and thawing.

## Applications

- Western Blot (Cell lysate)

RNF2 monoclonal antibody (M14), clone 2B4. Western Blot analysis of RNF2 expression in Raw 264.7(Cat # L024V1 ).

[Protocol Download](#)

- Western Blot (Cell lysate)

RNF2 monoclonal antibody (M14), clone 2B4. Western Blot analysis of RNF2 expression in HepG2 ( Cat # L019V1 ).

[Protocol Download](#)

- Western Blot (Cell lysate)

RNF2 monoclonal antibody (M14), clone 2B4. Western Blot analysis of RNF2 expression in NIH/3T3(Cat # L018V1 ).

[Protocol Download](#)

- Western Blot (Cell lysate)

RNF2 monoclonal antibody (M14), clone 2B4. Western Blot analysis of RNF2 expression in A-549 ( Cat # L025V1 ).

[Protocol Download](#)

- Western Blot (Cell lysate)

RNF2 monoclonal antibody (M14), clone 2B4. Western Blot analysis of RNF2 expression in PC-12(Cat # L012V1 ).

[Protocol Download](#)

- Western Blot (Recombinant protein)

[Protocol Download](#)

- Sandwich ELISA (Recombinant protein)

Detection limit for recombinant GST tagged RNF2 is approximately 3ng/ml as a capture antibody.

[Protocol Download](#)

- ELISA

## Gene Info — RNF2

Entrez GeneID	<a href="#">6045</a>
GeneBank Accession#	<a href="#">NM_007212</a>
Protein Accession#	<a href="#">NP_009143</a>
Gene Name	RNF2
Gene Alias	BAP-1, BAP1, DING, HIP13, RING1B, RING2
Gene Description	ring finger protein 2
Omim ID	<a href="#">608985</a>
Gene Ontology	<a href="#">Hyperlink</a>
Gene Summary	<p>Polycomb group (PcG) of proteins form the multiprotein complexes that are important for the transcription repression of various genes involved in development and cell proliferation. The protein encoded by this gene is one of the PcG proteins. It has been shown to interact with, and suppress the activity of, transcription factor CP2 (TFCP2/CP2). Studies of the mouse counterpart suggested the involvement of this gene in the specification of anterior-posterior axis, as well as in cell proliferation in early development. This protein was also found to interact with huntingtin interacting protein 2 (HIP2), an ubiquitin-conjugating enzyme, and possess ubiquitin ligase activity. [provided by RefSeq]</p>
Other Designations	OTTHUMP00000033405 OTTHUMP00000060668

## Disease

- [Carcinoma](#)
- [Genetic Predisposition to Disease](#)
- [Head and Neck Neoplasms](#)
- [Neoplasms](#)
- [Recurrence](#)