

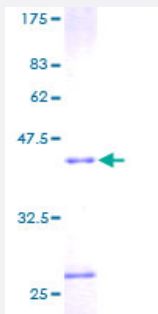
Full-Length

## RNASE4 (Human) Recombinant Protein (P01)

Catalog # H00006038-P01

Size 10 ug, 25 ug

### Applications



### Specification

<b>Product Description</b>	Human RNASE4 full-length ORF ( AAH15520, 1 a.a. - 147 a.a.) recombinant protein with GST-tag at N-terminal.
<b>Sequence</b>	MALQRTHSLLLLLLLTLLGLGLVQPSYGQDGMVQRFLRQHVHPEETGGSDRHCNLMQRRKMTL YHCKRFNTFIHEDIWNIRSICSTTNIQCKNGKMNCHGVVKVTD CRDTGSSRAPNCRYRAIASTRRV VIACEGNPQVPVHFDG
<b>Host</b>	Wheat Germ (in vitro)
<b>Theoretical MW (kDa)</b>	41.91
<b>Interspecies Antigen Sequence</b>	Mouse (84); Rat (82)
<b>Preparation Method</b>	<a href="#">in vitro wheat germ expression system</a>
<b>Purification</b>	Glutathione Sepharose 4 Fast Flow
<b>Quality Control Testing</b>	12.5% SDS-PAGE Stained with Coomassie Blue.
<b>Storage Buffer</b>	50 mM Tris-HCl, 10 mM reduced Glutathione, pH=8.0 in the elution buffer.
<b>Storage Instruction</b>	Store at -80°C. Aliquot to avoid repeated freezing and thawing.

## Note

Best use within three months from the date of receipt of this protein.

## Applications

- Enzyme-linked Immunoabsorbent Assay
- Western Blot (Recombinant protein)
- Antibody Production
- Protein Array

## Gene Info — RNASE4

Entrez GeneID [6038](#)

GeneBank Accession# [BC015520](#)

Protein Accession# [AAH15520](#)

Gene Name RNASE4

Gene Alias MGC9306, RNS4

Gene Description ribonuclease, RNase A family, 4

Omim ID [601030](#)

Gene Ontology [Hyperlink](#)

**Gene Summary** The protein encoded by this gene belongs to the pancreatic ribonuclease family. It plays an important role in mRNA cleavage and has marked specificity towards the 3' side of uridine nucleotides. Alternative splicing results in two transcript variants encoding the same protein. This gene and the gene that encodes angiogenin share promoters and 5' exons. Each gene splices to a unique downstream exon that contains its complete coding region. [provided by RefSeq]

**Other Designations** OTTHUMP00000164022

## Disease

- [Kidney Failure](#)

- [Obesity](#)