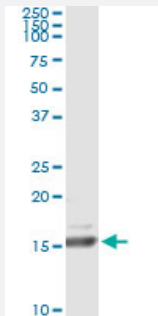


RLN1 (Human) IP-WB Antibody Pair

Catalog # H00006013-PW1

Size 1 Set

Applications



Immunoprecipitation of RLN1 transfected lysate using mouse monoclonal anti-RLN1 and Protein A Magnetic Bead ([U0007](#)), and immunoblotted with rabbit polyclonal anti-RLN1.

Specification

Product Description	This IP-WB antibody pair set comes with one antibody for immunoprecipitation and another to detect the precipitated protein in western blot.
Reactivity	Human
Quality Control Testing	Immunoprecipitation-Western Blot (IP-WB) Immunoprecipitation of RLN1 transfected lysate using mouse monoclonal anti-RLN1 and Protein A Magnetic Bead (U0007), and immunoblotted with rabbit polyclonal anti-RLN1.
Supplied Product	Antibody pair set content: 1. Antibody pair for IP: mouse monoclonal anti-RLN1 (300 ug) 2. Antibody pair for WB: rabbit polyclonal anti-RLN1 (50 ul)
Storage Instruction	Store reagents of the antibody pair set at -20°C or lower. Please aliquot to avoid repeated freeze thaw cycle. Reagents should be returned to -20°C storage immediately after use.

Applications

- Immunoprecipitation-Western Blot

[Protocol Download](#)

Gene Info — RLN1

Entrez GeneID [6013](#)

Gene Name RLN1

Gene Alias H1, RLXH1, bA12D24.3.1, bA12D24.3.2

Gene Description relaxin 1

Omim ID [179730](#)

Gene Ontology [Hyperlink](#)

Gene Summary Relaxins are known endocrine and autocrine/paracrine hormones, belonging to the insulin gene superfamily. In the human there are three non-allelic relaxin genes, RLN1, RLN2 and RLN3. RLN1 and RLN2 share high sequence homology. This encoded protein is synthesized as a single-chain polypeptide but the active form consists of an A chain and a B chain linked by disulfide bonds; however, their exact cleavage sites have not been described. Relaxin is produced by the ovary, and targets the mammalian reproductive system to ripen the cervix, elongate the pubic symphysis and inhibit uterine contraction. It may have additional roles in enhancing sperm motility, regulating blood pressure, controlling heart rate and releasing oxytocin and vasopressin. This gene has multiple polyadenylation sites. There are multiple alternatively spliced transcript variants described for this gene but their full length nature is not known yet. [provided by RefSeq]

Other Designations OTTHUMP00000021026|preprorelaxin H1|prorelaxin|relaxin H1

Disease

- [Genetic Predisposition to Disease](#)
- [Premature Birth](#)