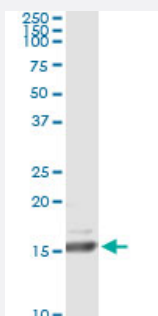


RLN1 monoclonal antibody (M01), clone 1H6

Catalog # H00006013-M01

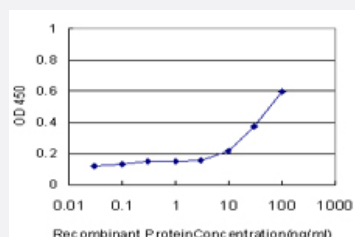
Size 100 ug

Applications



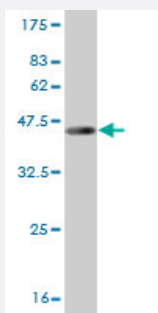
Immunoprecipitation

Immunoprecipitation of RLN1 transfected lysate using anti-RLN1 monoclonal antibody and Protein A Magnetic Bead, and immunoblotted with RLN1 MaxPab rabbit polyclonal antibody.



Sandwich ELISA (Recombinant protein)

Detection limit for recombinant GST tagged RLN1 is approximately 10ng/ml as a capture antibody.



Western Blot detection against Immunogen (43.12 KDa) .

Specification

Product Description

Mouse monoclonal antibody raised against a full length recombinant RLN1.

Immunogen	RLN1 (AAH05956.1, 27 a.a. ~ 185 a.a) full-length recombinant protein with GST tag. MW of the GST tag alone is 26 KDa.
Sequence	WKDDVIKLCGRELVRQAICGMSTWSKRSLSQEDAPQTPRPVAEIVPSFINKDTETIIIMLEFIANLP PELKAALSERQPSLPQLQQYVPALKDSNLSFEEFKKLIRNRQSEAADSNPSELKYLGLDTHSQKK RRPYVALFEKCCLIGCTKRSLAKYC
Host	Mouse
Reactivity	Human
Isotype	IgG2a Kappa
Quality Control Testing	Antibody Reactive Against Recombinant Protein. Western Blot detection against Immunogen (43.12 KDa) .
Storage Buffer	In 1x PBS, pH 7.4
Storage Instruction	Store at -20°C or lower. Aliquot to avoid repeated freezing and thawing.

Applications

- Western Blot (Recombinant protein)

[Protocol Download](#)

- Immunoprecipitation

Immunoprecipitation of RLN1 transfected lysate using anti-RLN1 monoclonal antibody and Protein A Magnetic Bead, and immunoblotted with RLN1 MaxPab rabbit polyclonal antibody.

[Protocol Download](#)

- Sandwich ELISA (Recombinant protein)

Detection limit for recombinant GST tagged RLN1 is approximately 10ng/ml as a capture antibody.

[Protocol Download](#)

- ELISA

Gene Info — RLN1

Entrez GeneID [6013](#)

GeneBank Accession# [BC005956](#)

Protein Accession#	AAH05956.1
Gene Name	RLN1
Gene Alias	H1, RLXH1, bA12D24.3.1, bA12D24.3.2
Gene Description	relaxin 1
Omim ID	179730
Gene Ontology	Hyperlink
Gene Summary	Relaxins are known endocrine and autocrine/paracrine hormones, belonging to the insulin gene superfamily. In the human there are three non-allelic relaxin genes, RLN1, RLN2 and RLN3. RLN1 and RLN2 share high sequence homology. This encoded protein is synthesized as a single-chain polypeptide but the active form consists of an A chain and a B chain linked by disulfide bonds; however, their exact cleavage sites have not been described. Relaxin is produced by the ovary, and targets the mammalian reproductive system to ripen the cervix, elongate the pubic symphysis and inhibit uterine contraction. It may have additional roles in enhancing sperm motility, regulating blood pressure, controlling heart rate and releasing oxytocin and vasopressin. This gene has multiple polyadenylation sites. There are multiple alternatively spliced transcript variants described for this gene but their full length nature is not known yet. [provided by RefSeq]
Other Designations	OTTHUMP00000021026 preprorelaxin H1 prorelaxin relaxin H1

Disease

- [Genetic Predisposition to Disease](#)
- [Premature Birth](#)