

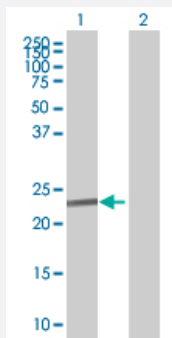
MaxPab®

RLN1 purified MaxPab mouse polyclonal antibody (B01P)

Catalog # H00006013-B01P

Size 50 ug

Applications



Western Blot (Transfected lysate)

Western Blot analysis of RLN1 expression in transfected 293T cell line ([H00006013-T01](#)) by RLN1 MaxPab polyclonal antibody.

Lane 1: RLN1 transfected lysate(20.35 KDa).

Lane 2: Non-transfected lysate.

Specification

Product Description	Mouse polyclonal antibody raised against a full-length human RLN1 protein.
Immunogen	RLN1 (NP_008842.1, 1 a.a. ~ 185 a.a) full-length human protein.
Sequence	MPRLFLFHLLFCLLLNQFSRAVAANKWKDDVIKLCGRELVRAQIAICGMSTWSKRSLSQEDAPQT PRPVAEIVPSFINKDTETIIIMLEFIANLPPELKAALSERQPSLPQLQQYVPALKDSNLSFEFEFKKLIR NRQSEAADSNPSELKYLGLDTHSQKKRRPYVALFEKCCLIGCTKRSLAKYC
Host	Mouse
Reactivity	Human
Quality Control Testing	Antibody reactive against mammalian transfected lysate.
Storage Buffer	In 1x PBS, pH 7.4
Storage Instruction	Store at -20°C or lower. Aliquot to avoid repeated freezing and thawing.

Applications

- Western Blot (Transfected lysate)

Western Blot analysis of RLN1 expression in transfected 293T cell line ([H00006013-T01](#)) by RLN1 MaxPab polyclonal antibody.

Lane 1: RLN1 transfected lysate(20.35 KDa).

Lane 2: Non-transfected lysate.

[Protocol Download](#)

Gene Info — RLN1

Entrez GeneID [6013](#)

GeneBank Accession# [NM_006911.2](#)

Protein Accession# [NP_008842.1](#)

Gene Name RLN1

Gene Alias H1, RLXH1, bA12D24.3.1, bA12D24.3.2

Gene Description relaxin 1

Omim ID [179730](#)

Gene Ontology [Hyperlink](#)

Gene Summary

Relaxins are known endocrine and autocrine/paracrine hormones, belonging to the insulin gene superfamily. In the human there are three non-allelic relaxin genes, RLN1, RLN2 and RLN3. RLN1 and RLN2 share high sequence homology. This encoded protein is synthesized as a single-chain polypeptide but the active form consists of an A chain and a B chain linked by disulfide bonds; however, their exact cleavage sites have not been described. Relaxin is produced by the ovary, and targets the mammalian reproductive system to ripen the cervix, elongate the pubic symphysis and inhibit uterine contraction. It may have additional roles in enhancing sperm motility, regulating blood pressure, controlling heart rate and releasing oxytocin and vasopressin. This gene has multiple polyadenylation sites. There are multiple alternatively spliced transcript variants described for this gene but their full length nature is not known yet. [provided by RefSeq]

Other Designations OTTHUMP00000021026|preprorelaxin H1|prorelaxin|relaxin H1

Disease

- [Genetic Predisposition to Disease](#)
- [Premature Birth](#)