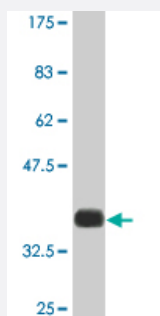


GRK1 monoclonal antibody (M02A), clone 4E9

Catalog # H00006011-M02A

Size 200 uL

Applications



Western Blot detection against Immunogen (36.63 KDa) .

Specification

Product Description	Mouse monoclonal antibody raised against a partial recombinant GRK1.
Immunogen	GRK1 (NP_002920.1, 51 a.a. ~ 150 a.a) partial recombinant protein with GST tag. MW of the GST tag alone is 26 KDa.
Sequence	RDSLSLEFESVCLEQPIGKKLFQQFLQSAEKHLPALELWKDIEDYDTADNDLQPQKAQTILAQYLD PQAKLFCFLDEGNVAKFKEGPVEIQDGLFQPLL
Host	Mouse
Reactivity	Human
Interspecies Antigen Sequence	Mouse (76); Rat (75)
Isotype	IgG2b Kappa
Quality Control Testing	Antibody Reactive Against Recombinant Protein. Western Blot detection against Immunogen (36.63 KDa) .
Storage Buffer	In ascites fluid
Storage Instruction	Store at -20°C or lower. Aliquot to avoid repeated freezing and thawing.

Applications

- Western Blot (Recombinant protein)

[Protocol Download](#)

- ELISA

Gene Info — GRK1

Entrez GeneID	6011
GeneBank Accession#	NM_002929
Protein Accession#	NP_002920.1
Gene Name	GRK1
Gene Alias	GPRK1, RHOK, RK
Gene Description	G protein-coupled receptor kinase 1
Omim ID	180381 258100
Gene Ontology	Hyperlink
Gene Summary	This gene encodes a member of the guanine nucleotide-binding protein (G protein)-coupled receptor kinase subfamily of the Ser/Thr protein kinase family. The protein phosphorylates rhodopsin and initiates its deactivation. Defects in GRK1 are known to cause Oguchi disease 2 (also known as stationary night blindness Oguchi type-2). [provided by RefSeq]
Other Designations	rhodopsin kinase

Pathway

- [Chemokine signaling pathway](#)
- [Endocytosis](#)