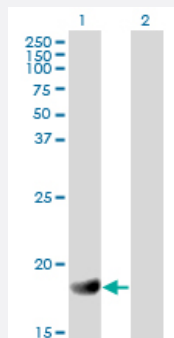


RGS3 monoclonal antibody (M01), clone 1E8-C7

Catalog # H00005998-M01

Size 100 ug

Applications

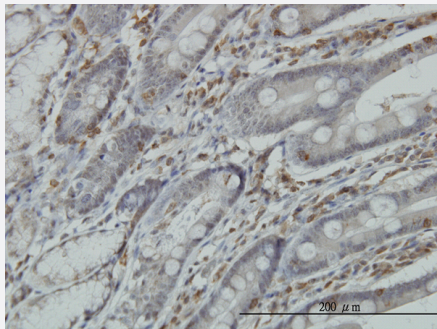


Western Blot (Transfected lysate)

Western Blot analysis of RGS3 expression in transfected 293T cell line by RGS3 monoclonal antibody (M01), clone 1E8-C7.

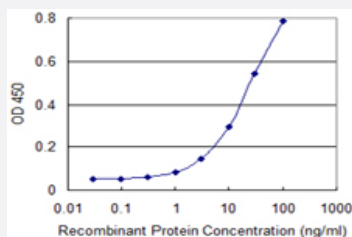
Lane 1: RGS3 transfected lysate (19.5 kDa).

Lane 2: Non-transfected lysate.



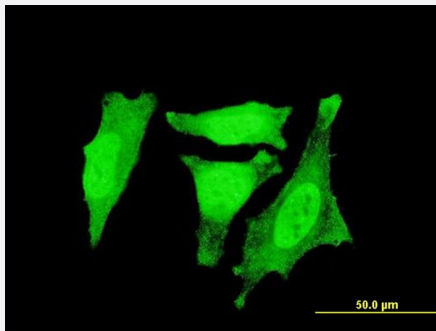
Immunohistochemistry (Formalin/PFA-fixed paraffin-embedded sections)

Immunoperoxidase of monoclonal antibody to RGS3 on formalin-fixed paraffin-embedded human small Intestine. [antibody concentration 3 ug/ml]



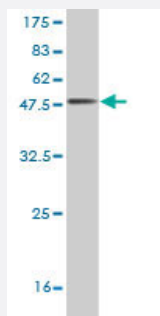
Sandwich ELISA (Recombinant protein)

Detection limit for recombinant GST tagged RGS3 is 0.3 ng/ml as a capture antibody.



Immunofluorescence

Immunofluorescence of monoclonal antibody to RGS3 on HeLa cell . [antibody concentration 10 ug/ml]



Western Blot detection against Immunogen (46.86 KDa) .

Specification

Product Description	Mouse monoclonal antibody raised against a full length recombinant RGS3.
Immunogen	RGS3 (AAH18072, 1 a.a. ~ 192 a.a) full-length recombinant protein with GST tag. MW of the GST tag alone is 26 KDa.
Sequence	MLRGMYLTRNGNLQRRHTMKEAKDMKNKLGIFRRRSESPGAPPAGKADKMMKSFKPTSEEALK WGESLEKLLVHKYGLAVFQAFLRTEFSEENLEFWLACEDFKKVKSQSKMASKAKKIFA EYIAIQA CKEVNLD SYTREHTKDNLQSVTRGCFDLAQKRIFGLMEKDSYPRFLRSDLYLDLINQKKMSPPL
Host	Mouse
Reactivity	Human
Isotype	IgG1 Kappa
Quality Control Testing	Antibody Reactive Against Recombinant Protein. Western Blot detection against Immunogen (46.86 KDa) .
Storage Buffer	In 1x PBS, pH 7.4
Storage Instruction	Store at -20°C or lower. Aliquot to avoid repeated freezing and thawing.

Applications

- Western Blot (Transfected lysate)

Western Blot analysis of RGS3 expression in transfected 293T cell line by RGS3 monoclonal antibody (M01), clone 1E8-C7.

Lane 1: RGS3 transfected lysate(19.5 KDa).

Lane 2: Non-transfected lysate.

[Protocol Download](#)

- Western Blot (Recombinant protein)

[Protocol Download](#)

- Immunohistochemistry (Formalin/PFA-fixed paraffin-embedded sections)

Immunoperoxidase of monoclonal antibody to RGS3 on formalin-fixed paraffin-embedded human small Intestine. [antibody concentration 3 ug/ml]

[Protocol Download](#)

- Sandwich ELISA (Recombinant protein)

Detection limit for recombinant GST tagged RGS3 is 0.3 ng/ml as a capture antibody.

[Protocol Download](#)

- ELISA

- Immunofluorescence

Immunofluorescence of monoclonal antibody to RGS3 on HeLa cell . [antibody concentration 10 ug/ml]

Gene Info — RGS3

Entrez GeneID [5998](#)

GeneBank Accession# [BC018072](#)

Protein Accession# [AAH18072](#)

Gene Name RGS3

Gene Alias C2PA, FLJ20370, FLJ31516, FLJ90496, PDZ-RGS3, RGP3

Gene Description regulator of G-protein signaling 3

Omim ID [602189](#)

Gene Ontology

[Hyperlink](#)

Gene Summary

This gene encodes a member of the regulator of G-protein signaling (RGS) family. This protein is a GTP-ase activating protein which inhibits G-protein mediated signal transduction. The protein is largely cytosolic, but G-protein activation leads to translocation of this protein to the plasma membrane. A nuclear form of this protein has also been described, but its sequence has not been identified. Multiple alternatively spliced transcript variants have been described for this gene but the full-length nature of some transcripts is not yet known. [provided by RefSeq]

Other Designations

OTTHUMP00000022813|OTTHUMP00000022814|OTTHUMP00000022815|regulator of G-protein signalling 3

Pathway

- [Axon guidance](#)

Disease

- [Carcinoma](#)
- [Cardiovascular Diseases](#)
- [Diabetes Mellitus](#)
- [Edema](#)
- [Genetic Predisposition to Disease](#)
- [Head and Neck Neoplasms](#)
- [Neoplasm Recurrence](#)
- [Neoplasms](#)