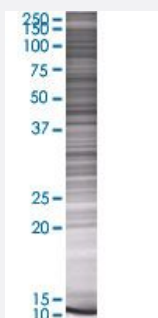


RFXAP 293T Cell Transient Overexpression Lysate(Denatured)

Catalog # H00005994-T01

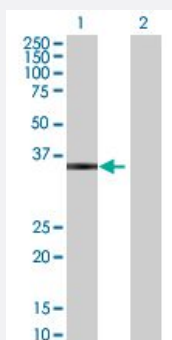
Size 100 uL

Applications



SDS-PAGE Gel

RFXAP transfected lysate.



Western Blot

Lane 1: RFXAP transfected lysate (30.03 KDa)

Lane 2: Non-transfected lysate.

Specification

Transfected Cell Line 293T

Plasmid pCMV-RFXAP full-length

Host Human

Theoretical MW (kDa) 30.03

Quality Control Testing Transient overexpression cell lysate was tested with Anti-RFXAP antibody ([H00005994-B01](#)) by Western Blots.
SDS-PAGE Gel
RFXAP transfected lysate.
Western Blot
Lane 1: RFXAP transfected lysate (30.03 KDa)
Lane 2: Non-transfected lysate.

Storage Buffer	1X Sample Buffer (50 mM Tris-HCl, 2% SDS, 10% glycerol, 300 mM 2-mercaptoethanol, 0.01% Bromophenol blue)
Storage Instruction	Store at -80°C. Aliquot to avoid repeated freezing and thawing.

Applications

- Western Blot

Gene Info — RFXAP

Entrez GeneID	5994
GeneBank Accession#	BC026088.1
Protein Accession#	AAH26088.1
Gene Name	RFXAP
Gene Alias	-
Gene Description	regulatory factor X-associated protein
Omim ID	209920 601861
Gene Ontology	Hyperlink
Gene Summary	Major histocompatibility (MHC) class II molecules are transmembrane proteins that have a central role in development and control of the immune system. The protein encoded by this gene, along with regulatory factor X-associated ankyrin-containing protein and regulatory factor-5, forms a complex that binds to the X box motif of certain MHC class II gene promoters and activates their transcription. Once bound to the promoter, this complex associates with the non-DNA-binding factor MHC class II transactivator, which controls the cell type specificity and inducibility of MHC class II gene expression. Mutations in this gene have been linked to bare lymphocyte syndrome type II, complementation group D. Transcript variants utilizing different polyA signals have been found for this gene. [provided by RefSeq]
Other Designations	OTTHUMP00000018260 RFX DNA-binding complex 36 kDa subunit RFX-associated protein

Pathway

- [Antigen processing and presentation](#)
- [Primary immunodeficiency](#)