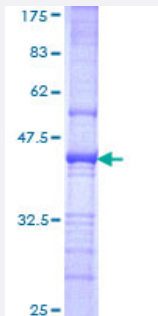


RFX2 (Human) Recombinant Protein (Q01)

Catalog # H00005990-Q01

Size 25 ug, 10 ug

Applications



Specification

Product Description	Human RFX2 partial ORF (NP_000626, 323 a.a. - 429 a.a.) recombinant protein with GST-tag at N-terminal.
Sequence	PEQTMVQSQHHQQYIDVSHVFPEFPAPDLGSFLLQDGVTLHDVKALQLVYRRHCEATVDVVMNLQFHIEKLWLSFWNSKASSSDGPTSLPASDEDPEGAVLPKDK
Host	Wheat Germ (in vitro)
Theoretical MW (kDa)	37.51
Interspecies Antigen Sequence	Rat (85)
Preparation Method	in vitro wheat germ expression system
Purification	Glutathione Sepharose 4 Fast Flow
Quality Control Testing	12.5% SDS-PAGE Stained with Coomassie Blue.
Storage Buffer	50 mM Tris-HCl, 10 mM reduced Glutathione, pH=8.0 in the elution buffer.
Storage Instruction	Store at -80°C. Aliquot to avoid repeated freezing and thawing.
Note	Best use within three months from the date of receipt of this protein.

Applications

- Enzyme-linked Immunoabsorbent Assay
- Western Blot (Recombinant protein)
- Antibody Production
- Protein Array

Gene Info — RFX2

Entrez GeneID [5990](#)

GeneBank Accession# [NM_000635](#)

Protein Accession# [NP_000626](#)

Gene Name RFX2

Gene Alias FLJ14226

Gene Description regulatory factor X, 2 (influences HLA class II expression)

Omim ID [142765](#)

Gene Ontology [Hyperlink](#)

Gene Summary This gene is a member of the regulatory factor X gene family, which encodes transcription factors that contain a highly-conserved winged helix DNA binding domain. The protein encoded by this gene is structurally related to regulatory factors X1, X3, X4, and X5. It is a transcriptional activator that can bind DNA as a monomer or as a heterodimer with other RFX family members. This protein can bind to cis elements in the promoter of the IL-5 receptor alpha gene. Two transcript variants encoding different isoforms have been described for this gene, and both variants utilize alternative polyadenylation sites. [provided by RefSeq]

Other Designations DNA binding protein RFX2|HLA class II regulatory factor RFX2|regulatory factor X2|trans-acting regulatory factor 2

Disease

- [Cardiovascular Diseases](#)
- [Diabetes Mellitus](#)

- [Edema](#)