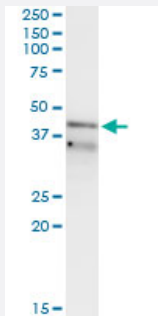


# RFC3 (Human) IP-WB Antibody Pair

Catalog # H00005983-PW1

Size 1 Set

## Applications



Immunoprecipitation of RFC3 transfected lysate using mouse monoclonal anti-RFC3 and Protein A Magnetic Bead ([U0007](#)), and immunoblotted with mouse monoclonal anti-RFC3.

## Specification

<b>Product Description</b>	This IP-WB antibody pair set comes with one antibody for immunoprecipitation and another to detect the precipitated protein in western blot.
<b>Reactivity</b>	Human
<b>Quality Control Testing</b>	Immunoprecipitation-Western Blot (IP-WB) Immunoprecipitation of RFC3 transfected lysate using mouse monoclonal anti-RFC3 and Protein A Magnetic Bead ( <a href="#">U0007</a> ), and immunoblotted with mouse monoclonal anti-RFC3.
<b>Supplied Product</b>	Antibody pair set content: 1. Antibody pair for IP: mouse monoclonal anti-RFC3 (300 ug) 2. Antibody pair for WB: mouse monoclonal anti-RFC3 (50 ug)
<b>Storage Instruction</b>	Store reagents of the antibody pair set at -20°C or lower. Please aliquot to avoid repeated freeze thaw cycle. Reagents should be returned to -20°C storage immediately after use.

## Applications

- Immunoprecipitation-Western Blot

[Protocol Download](#)

## Gene Info — RFC3

Entrez GeneID	<a href="#">5983</a>
Gene Name	RFC3
Gene Alias	MGC5276, RFC38
Gene Description	replication factor C (activator 1) 3, 38kDa
Omim ID	<a href="#">600405</a>
Gene Ontology	<a href="#">Hyperlink</a>
Gene Summary	The elongation of primed DNA templates by DNA polymerase delta and DNA polymerase epsilon requires the accessory proteins proliferating cell nuclear antigen (PCNA) and replication factor C (RFC). RFC, also named activator 1, is a protein complex consisting of five distinct subunits of 140, 40, 38, 37, and 36 kDa. This gene encodes the 38 kDa subunit. This subunit is essential for the interaction between the 140 kDa subunit and the core complex that consists of the 36, 37, and 40 kDa subunits. Alternatively spliced transcript variants encoding distinct isoforms have been described. [provided by RefSeq]
Other Designations	A1 38 kDa subunit OTTHUMP00000018237 RFC, 38 kD subunit replication factor C (activator 1) 3 (38kD) replication factor C 3

## Pathway

- [DNA replication](#)
- [Mismatch repair](#)
- [Nucleotide excision repair](#)

## Disease

- [Cardiovascular Diseases](#)
- [Diabetes Mellitus](#)
- [Edema](#)
- [Graft vs Host Disease](#)
- [Kidney Failure](#)
- [Tobacco Use Disorder](#)

- [Urinary Bladder Neoplasms](#)