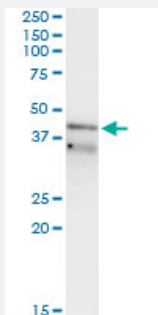


RFC3 monoclonal antibody (M01), clone 1C6

Catalog # H00005983-M01

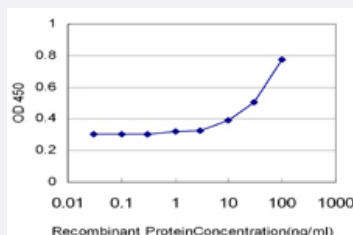
Size 100 ug

Applications



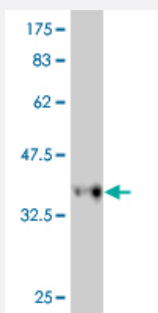
Immunoprecipitation

Immunoprecipitation of RFC3 transfected lysate using anti-RFC3 monoclonal antibody and Protein A Magnetic Bead, and immunoblotted with RFC3 monoclonal antibody.



Sandwich ELISA (Recombinant protein)

Detection limit for recombinant GST tagged RFC3 is approximately 10ng/ml as a capture antibody.



Western Blot detection against Immunogen (36.63 KDa) .

Specification

Product Description

Mouse monoclonal antibody raised against a partial recombinant RFC3.

Immunogen	RFC3 (AAH00149, 257 a.a. ~ 356 a.a) partial recombinant protein with GST tag. MW of the GST tag alone is 26 KDa.
Sequence	ETANAIVSQQTPQRLLEVVRGRLYELLTHCIPPEIIMKGLLSELLHNCDGQLKGEVAQMAAYEHLRLQ LGSKAIYHLEAFVAKFMALYKKFMEDGLEGMMF
Host	Mouse
Reactivity	Human
Isotype	IgG2a Kappa
Quality Control Testing	Antibody Reactive Against Recombinant Protein. Western Blot detection against Immunogen (36.63 KDa) .
Storage Buffer	In 1x PBS, pH 7.4
Storage Instruction	Store at -20°C or lower. Aliquot to avoid repeated freezing and thawing.

Applications

- Western Blot (Recombinant protein)

[Protocol Download](#)

- Immunoprecipitation

Immunoprecipitation of RFC3 transfected lysate using anti-RFC3 monoclonal antibody and Protein A Magnetic Bead, and immunoblotted with RFC3 monoclonal antibody.

[Protocol Download](#)

- Sandwich ELISA (Recombinant protein)

Detection limit for recombinant GST tagged RFC3 is approximately 10ng/ml as a capture antibody.

[Protocol Download](#)

- ELISA

Gene Info — RFC3

Entrez GeneID [5983](#)

GeneBank Accession# [BC000149](#)

Protein Accession#	AAH00149
Gene Name	RFC3
Gene Alias	MGC5276, RFC38
Gene Description	replication factor C (activator 1) 3, 38kDa
Omim ID	600405
Gene Ontology	Hyperlink
Gene Summary	<p>The elongation of primed DNA templates by DNA polymerase delta and DNA polymerase epsilon requires the accessory proteins proliferating cell nuclear antigen (PCNA) and replication factor C (RFC). RFC, also named activator 1, is a protein complex consisting of five distinct subunits of 140, 40, 38, 37, and 36 kDa. This gene encodes the 38 kDa subunit. This subunit is essential for the interaction between the 140 kDa subunit and the core complex that consists of the 36, 37, and 40 kDa subunits. Alternatively spliced transcript variants encoding distinct isoforms have been described. [provided by RefSeq]</p>
Other Designations	A1 38 kDa subunit OTTHUMP00000018237 RFC, 38 kD subunit replication factor C (activator 1) 3 (38kD) replication factor C 3

Pathway

- [DNA replication](#)
- [Mismatch repair](#)
- [Nucleotide excision repair](#)

Disease

- [Cardiovascular Diseases](#)
- [Diabetes Mellitus](#)
- [Edema](#)
- [Graft vs Host Disease](#)
- [Kidney Failure](#)
- [Tobacco Use Disorder](#)
- [Urinary Bladder Neoplasms](#)