

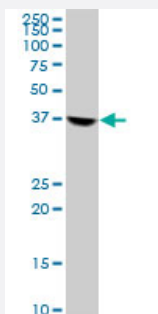
MaxPab®

## RFC2 purified MaxPab mouse polyclonal antibody (B02P)

Catalog # H00005982-B02P

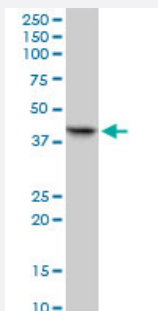
Size 50 ug

### Applications



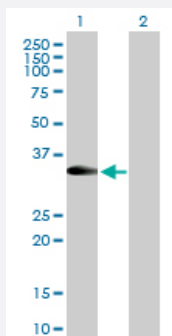
#### Western Blot (Cell lysate)

RFC2 MaxPab polyclonal antibody. Western Blot analysis of RFC2 expression in HL-60.



#### Western Blot (Cell lysate)

RFC2 MaxPab polyclonal antibody. Western Blot analysis of RFC2 expression in HeLa.

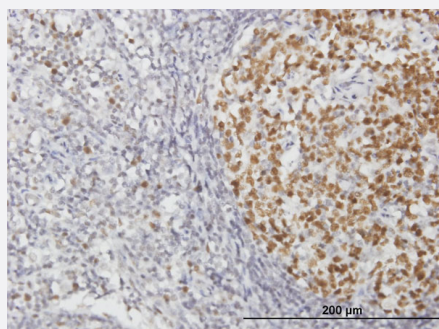


#### Western Blot (Transfected lysate)

Western Blot analysis of RFC2 expression in transfected 293T cell line ([H00005982-T02](#)) by RFC2 MaxPab polyclonal antibody.

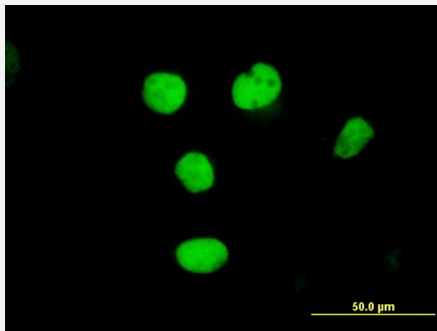
Lane 1: RFC2 transfected lysate(35.2 KDa).

Lane 2: Non-transfected lysate.



#### Immunohistochemistry (Formalin/PFA-fixed paraffin-embedded sections)

Immunoperoxidase of purified MaxPab antibody to RFC2 on formalin-fixed paraffin-embedded human lymph node. [antibody concentration 3 ug/ml]



## Immunofluorescence

Immunofluorescence of purified MaxPab antibody to RFC2 on HeLa cell.  
[antibody concentration 10 ug/ml]

## Specification

<b>Product Description</b>	Mouse polyclonal antibody raised against a full-length human RFC2 protein.
<b>Immunogen</b>	RFC2 (NP_002905.2, 1 a.a. ~ 320 a.a) full-length human protein.
<b>Sequence</b>	MEVEAVCGGAGEVEAQDSDPAPAFSKAPGSAGHYELPWVEKYRPVKLNEIVGNEDTVSRLEVF AREGNVPNIAGPPGTGKTTSILCLARALLGPALKDAMLELNASNDSMTDGAQQALRRTMEIYSKT TRFALACNASDKIIEPIQSRCAVLRYSKLTDAILTRLMNVIEKERVPTDDGLEAIIIFTAQGDMRQAL NNLQSTFSGFGFINSENVFKVCDEPHLLVKEMIQHCNVANIDEAYKILAHLWHLGYSPEDIIGNIFR VCKTFQMAEYKLLEFIKEIGYTHMKIAEGVNSLLQMAGLLARLCQKTMAPVAS
<b>Host</b>	Mouse
<b>Reactivity</b>	Human
<b>Interspecies Antigen Sequence</b>	Mouse (82); Rat (82)
<b>Quality Control Testing</b>	Antibody reactive against mammalian transfected lysate.
<b>Storage Buffer</b>	In 1x PBS, pH 7.4
<b>Storage Instruction</b>	Store at -20°C or lower. Aliquot to avoid repeated freezing and thawing.

## Applications

- Western Blot (Cell lysate)

RFC2 MaxPab polyclonal antibody. Western Blot analysis of RFC2 expression in HL-60.

[Protocol Download](#)

- Western Blot (Cell lysate)

RFC2 MaxPab polyclonal antibody. Western Blot analysis of RFC2 expression in HeLa.

[Protocol Download](#)

- Western Blot (Transfected lysate)

Western Blot analysis of RFC2 expression in transfected 293T cell line ([H00005982-T02](#)) by RFC2 MaxPab polyclonal antibody.

Lane 1: RFC2 transfected lysate(35.2 KDa).

Lane 2: Non-transfected lysate.

[Protocol Download](#)

- Immunohistochemistry (Formalin/PFA-fixed paraffin-embedded sections)

Immunoperoxidase of [purified](#) MaxPab antibody to RFC2 on formalin-fixed paraffin-embedded human lymph node. [antibody concentration 3 ug/ml]

[Protocol Download](#)

- Immunofluorescence

Immunofluorescence of [purified](#) MaxPab antibody to RFC2 on HeLa cell. [antibody concentration 10 ug/ml]

## Gene Info — RFC2

Entrez GeneID [5982](#)

GeneBank Accession# [NM\\_002914](#)

Protein Accession# [NP\\_002905.2](#)

Gene Name RFC2

Gene Alias A1, MGC3665, RFC40

Gene Description replication factor C (activator 1) 2, 40kDa

Omim ID [600404](#)

Gene Ontology [Hyperlink](#)

**Gene Summary**

The elongation of primed DNA templates by DNA polymerase delta and epsilon requires the action of the accessory proteins, proliferating cell nuclear antigen (PCNA) and replication factor C (RFC). RFC, also called activator 1, is a protein complex consisting of five distinct subunits of 145, 40, 38, 37, and 36.5 kD. This gene encodes the 40 kD subunit, which has been shown to be responsible for binding ATP. Deletion of this gene has been associated with Williams syndrome. Alternatively spliced transcript variants encoding distinct isoforms have been described. [provided by RefSeq]

**Other Designations**

activator 1|replication factor C 2

**Pathway**

- [DNA replication](#)
- [Mismatch repair](#)
- [Nucleotide excision repair](#)

**Disease**

- [Genetic Predisposition to Disease](#)
- [Graft vs Host Disease](#)
- [Multiple Sclerosis](#)
- [Urinary Bladder Neoplasms](#)