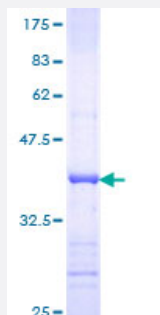


# REG1A (Human) Recombinant Protein (Q01)

Catalog # H00005967-Q01

Size 25 ug, 10 ug

## Applications



## Specification

<b>Product Description</b>	Human REG1A partial ORF ( AAH05350, 67 a.a. - 166 a.a.) recombinant protein with GST-tag at N-terminal.
<b>Sequence</b>	MNSGNLVSVLTAEGAFVASLIKESGTDDFNWIGLHDPKKNRRWHWSSGSLVSYKSWGIGAPS SVNPGYCVSLTSSTGFQKWKDVPCEDKFSFVCKFKN
<b>Host</b>	Wheat Germ (in vitro)
<b>Theoretical MW (kDa)</b>	36.63
<b>Interspecies Antigen Sequence</b>	Mouse (76); Rat (71)
<b>Preparation Method</b>	<a href="#">in vitro wheat germ expression system</a>
<b>Purification</b>	Glutathione Sepharose 4 Fast Flow
<b>Quality Control Testing</b>	12.5% SDS-PAGE Stained with Coomassie Blue.
<b>Storage Buffer</b>	50 mM Tris-HCl, 10 mM reduced Glutathione, pH=8.0 in the elution buffer.
<b>Storage Instruction</b>	Store at -80°C. Aliquot to avoid repeated freezing and thawing.
<b>Note</b>	Best use within three months from the date of receipt of this protein.

## Applications

- Enzyme-linked Immunoabsorbent Assay
- Western Blot (Recombinant protein)
- Antibody Production
- Protein Array

## Gene Info — REG1A

Entrez GeneID [5967](#)

GeneBank Accession# [BC005350](#)

Protein Accession# [AAH05350](#)

Gene Name REG1A

Gene Alias ICRF, MGC12447, P19, PSP, PSPS, PSPS1, PTP, REG

Gene Description regenerating islet-derived 1 alpha

Omim ID [167770](#)

Gene Ontology [Hyperlink](#)

**Gene Summary** This gene is a type I subclass member of the Reg gene family. The Reg gene family is a multigenic family grouped into four subclasses, types I, II, III and IV, based on the primary structures of the encoded proteins. This gene encodes a protein that is secreted by the exocrine pancreas. It is associated with islet cell regeneration and diabetogenesis and may be involved in pancreatic lithogenesis. Reg family members REG1B, REGL, PAP and this gene are tandemly clustered on chromosome 2p12 and may have arisen from the same ancestral gene by gene duplication. [provided by RefSeq]

**Other Designations** OTTHUMP00000160485|islet cells regeneration factor|islet of langerhans regenerating protein|lithostathine 1 alpha|pancreatic stone protein, secretory|pancreatic thread protein|protein-X|regenerating islet-derived 1 alpha (pancreatic stone protein, pancrea

## Disease

- [Calcinosis](#)

- [Diabetes Mellitus](#)
- [Pancreatitis](#)
- [Tobacco Use Disorder](#)